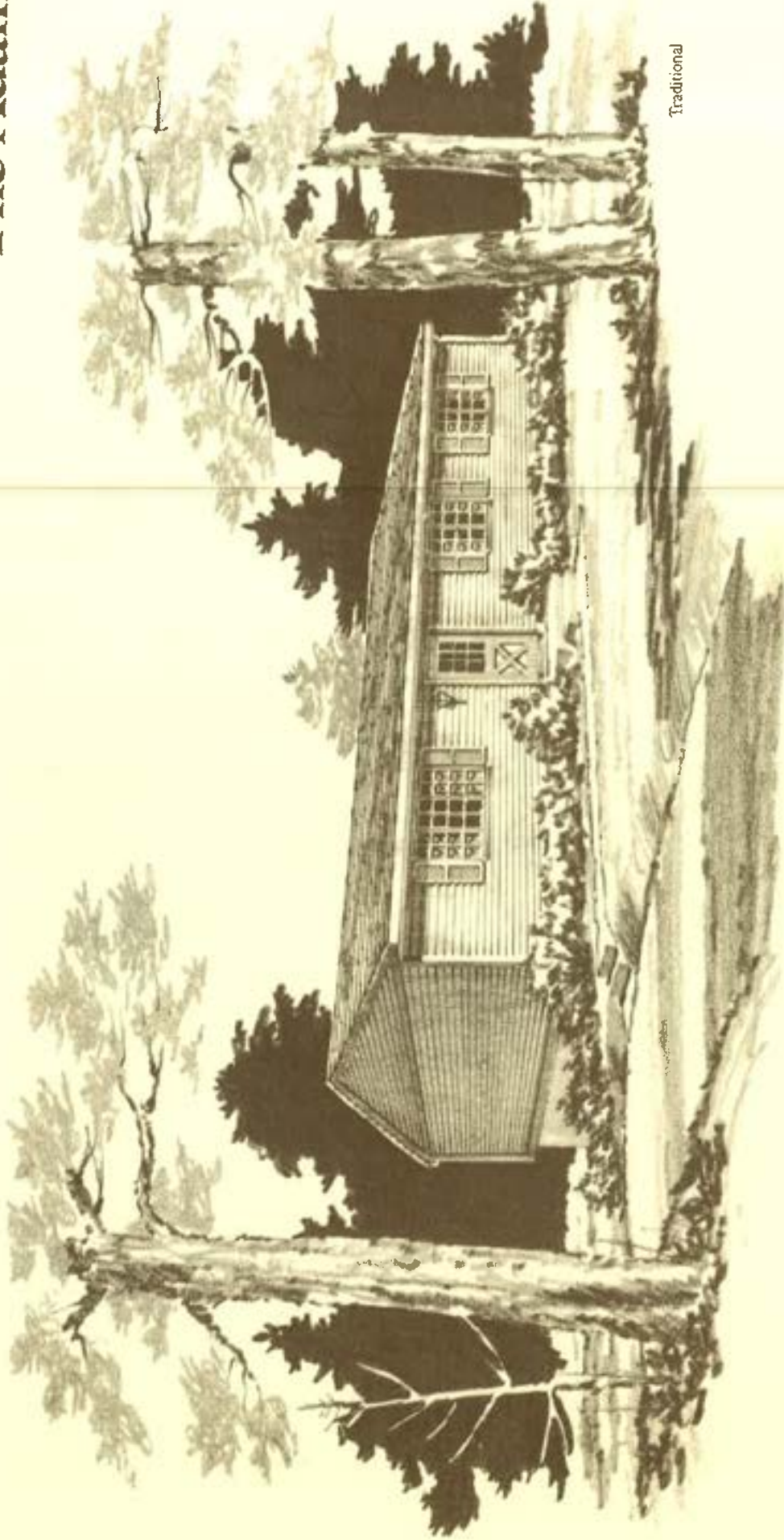


The Adams



Traditional



Traditional



Rustic

The Adams

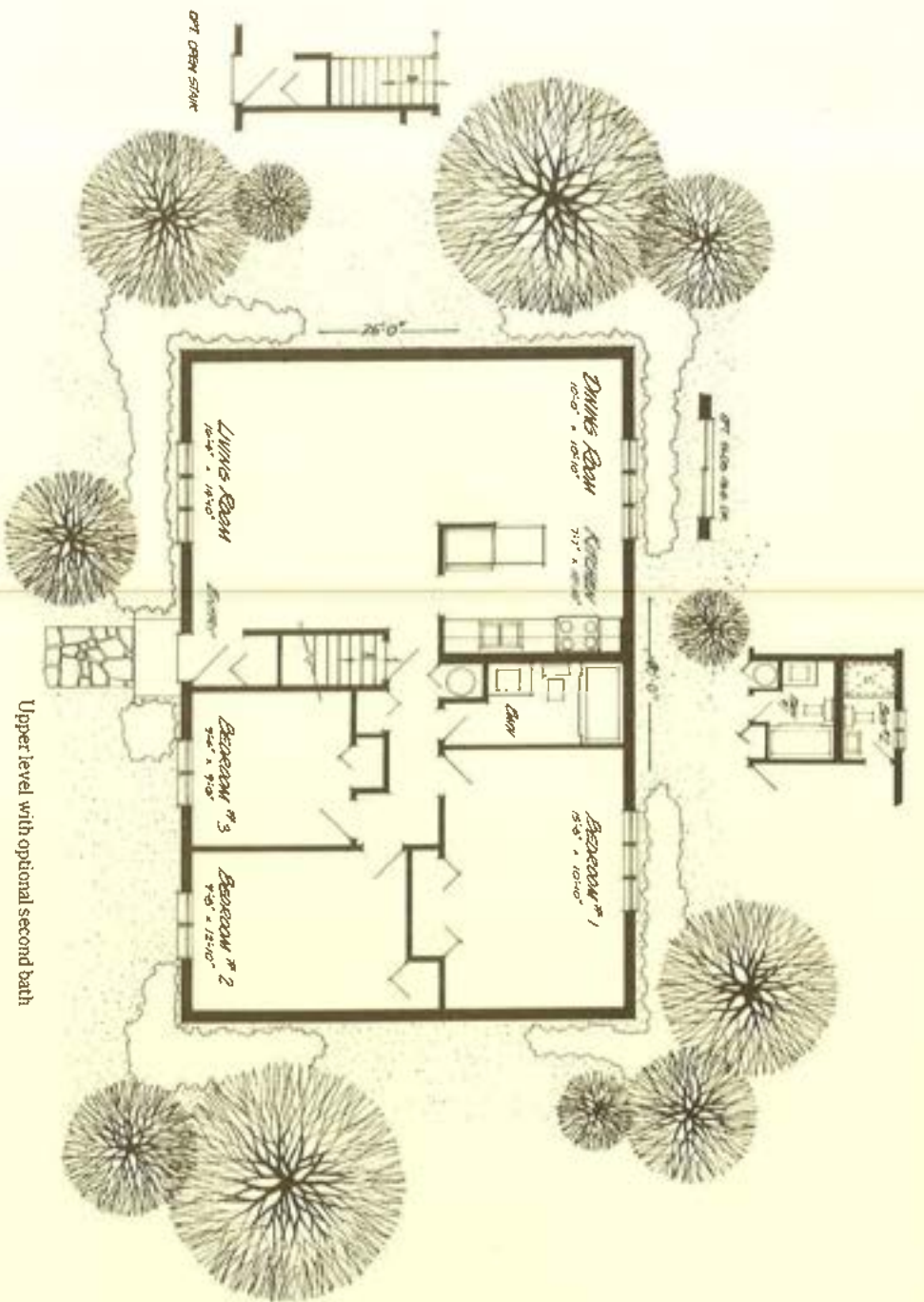
This versatile ranch home is planned to give you the flexibility needed for various life styles and design preferences.

The entry, with handy guest closet, leads to a spacious living and dining room area which provides an open-flow traffic pattern to the adjacent kitchen. There's an option for a sliding glass door off the dining room. And the kitchen includes an oven/range as well as handsome custom cabinets.

There are three bedrooms and a full bath with vanity. You also have the option of an extra shower bath off the master bedroom.

The basement level includes a two-car front or rear integral garage, plenty of storage space, and a laundry area. For added living and entertaining activities, there's an option for a family room and powder room. And the family room can include an optional fireplace.

Wall-to-wall carpeting brings an extra touch of luxury to living-dining areas, bedrooms, closets, hallway and stairs. The Adams is super-sealed and insulated our special way to save energy. We also make presetlement and six-month service inspections to assure your satisfaction.



Upper level with optional second bath



Unfinished lower level

Upper level with 3 bedrooms and optional second bath

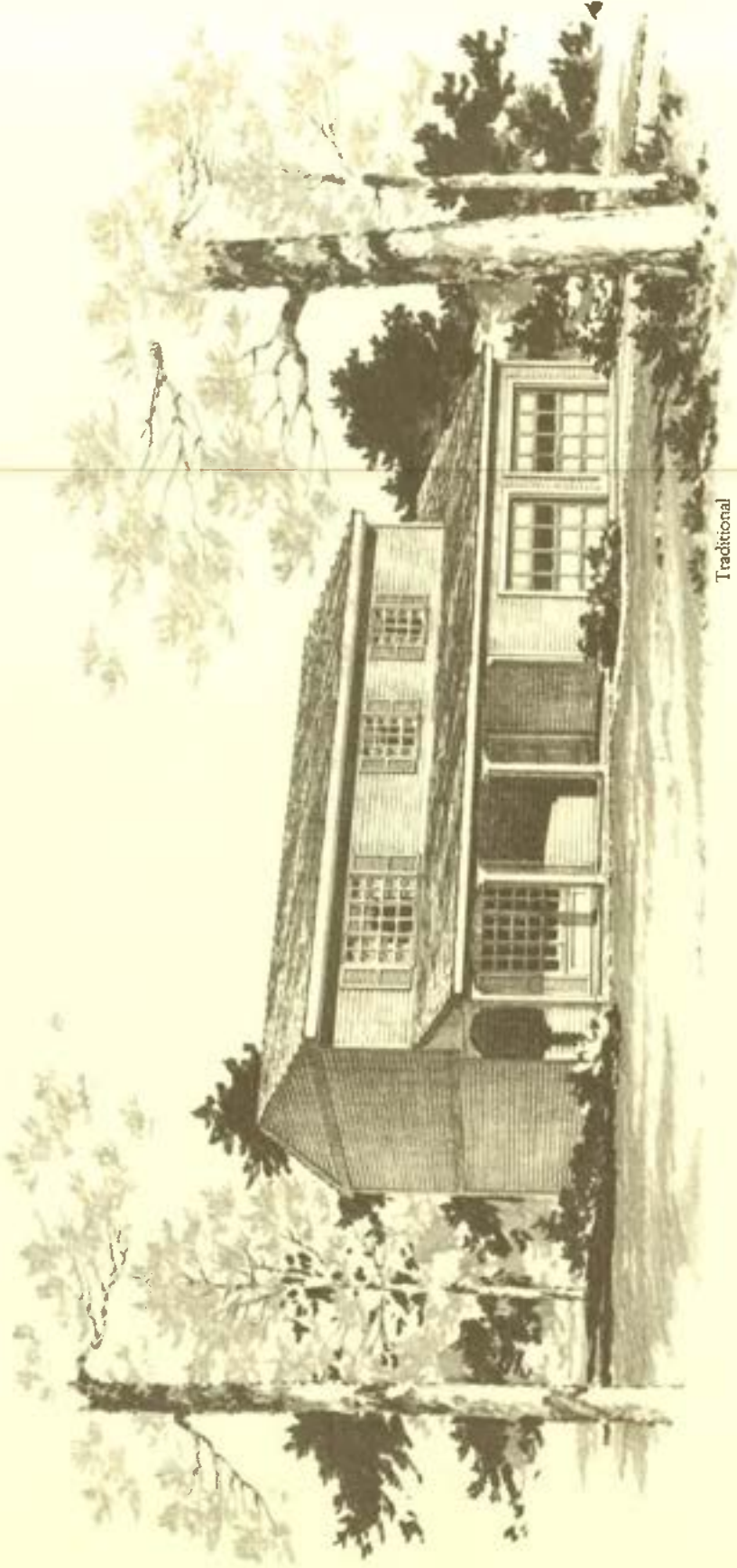
Finished lower level with optional powder room



This sheet is for illustrative purposes only and not part of a legal contract. Floor plans and standard features may vary according to alternate style selected and are subject to change without notice. Optional items indicated are available at additional cost.



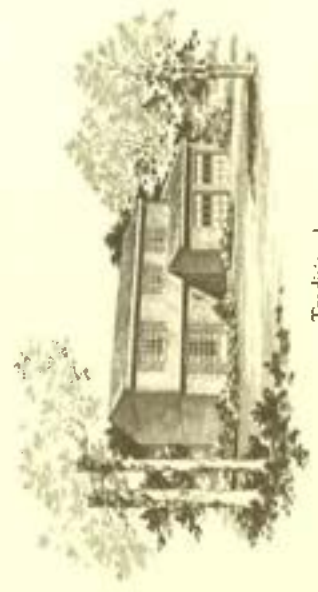
The Ardmore



Traditional



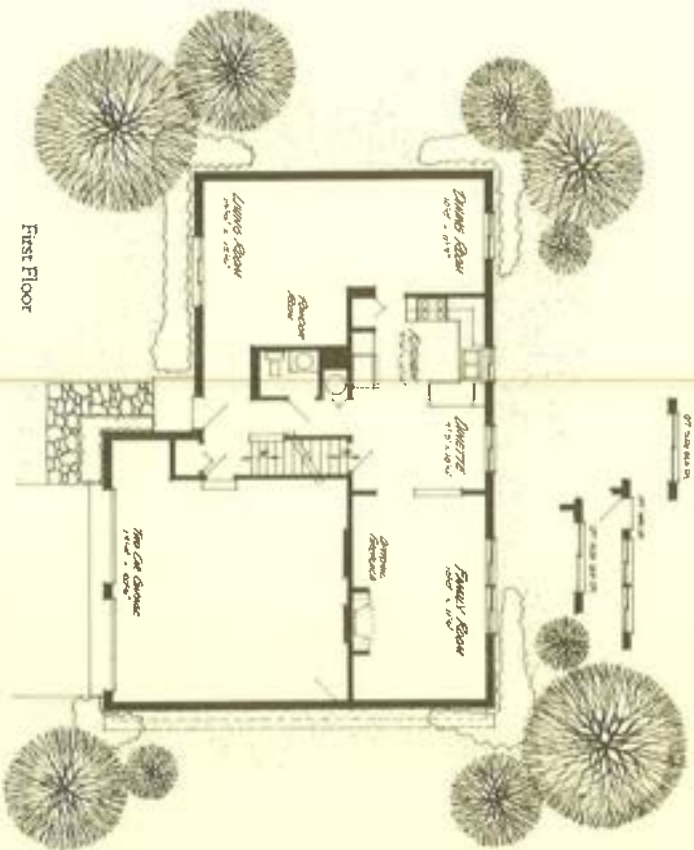
Colonial



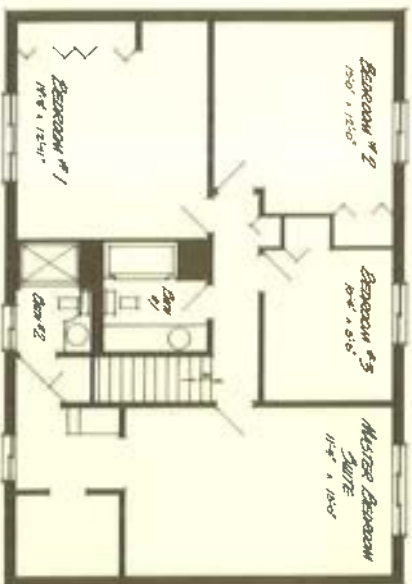
Traditional



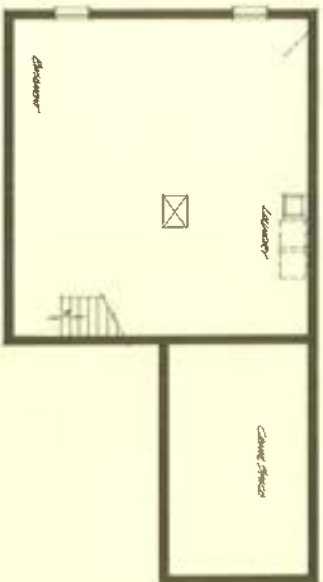
Early American



First Floor



Second Floor



Unfinished Basement

The Ardmore

Here's a beautiful home designed to provide ample space and luxury for the active household. This spacious two-story is available with a choice of traditional, Colonial or Early American exteriors.

The first-floor plan includes a two-car garage, and is available with alternate porch elevations. There's a spacious entry hall with a convenient powder room nearby. The sprawling living-dining rooms are ideal for formal entertaining.

An adjacent kitchen is handsomely equipped with oven/range and custom cabinets. It also includes a dinette and pantry/closet. There's a large family room for relaxing or entertaining, with a wood-burning fireplace available. Sliding glass doors are available off the family room, opening to the rear yard.

Upstairs are four bedrooms and a full bath with vanity. The master bedroom suite has its own private shower bath, dressing area and large walk-in closet. Wall-to-wall carpeting is standard in living areas, family room, bedrooms, closets, and on stairs.

The Ardmore also has a roomy basement with laundry area. Ryan's Standard Energy Package super-seals and insulates your home against the elements.* And we make pre-shipment and six-month service inspections for your satisfaction.

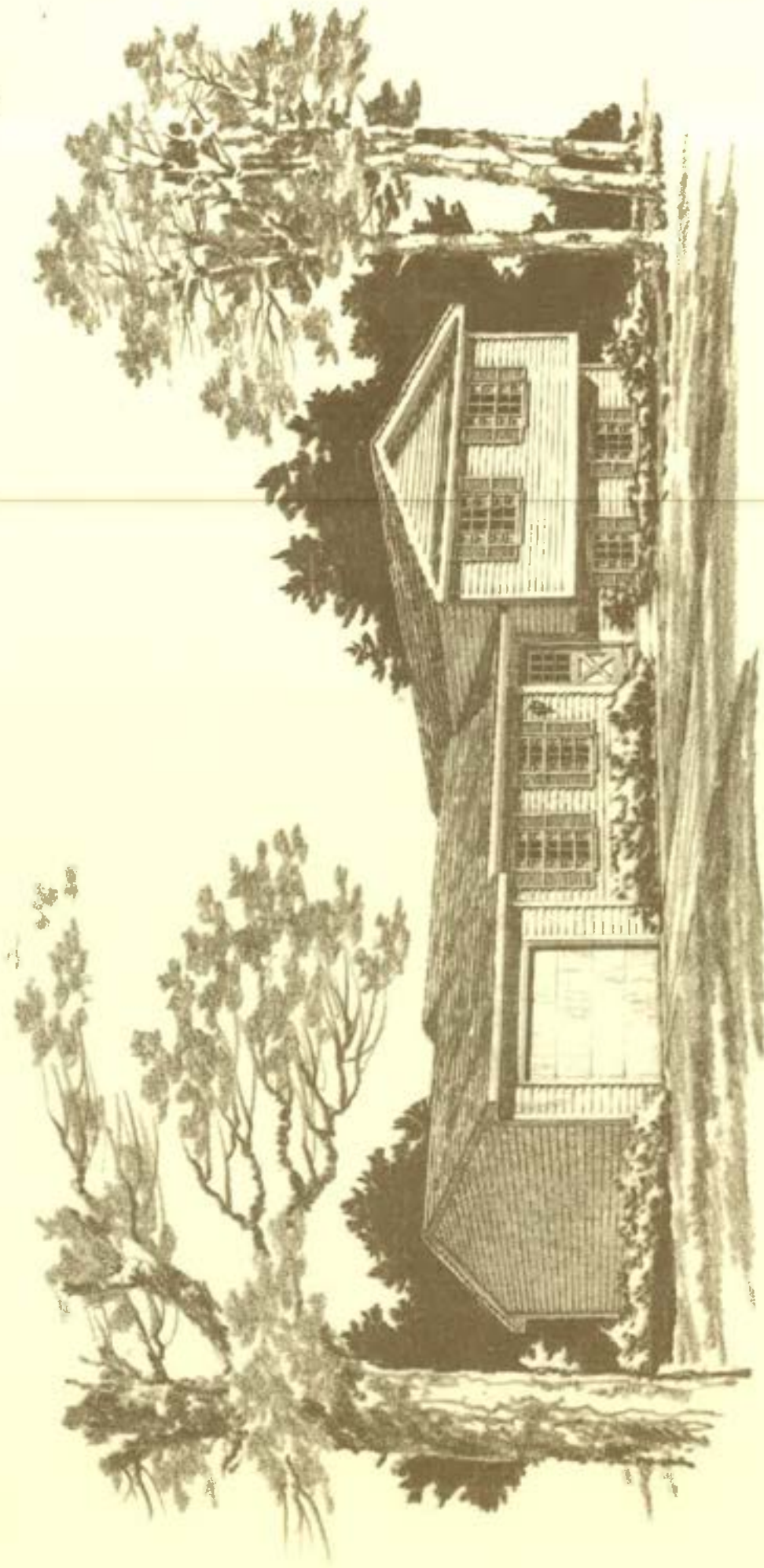
*Savings vary. Find out why in the seller's fact sheet on R-values. Higher R-values mean greater insulating power.



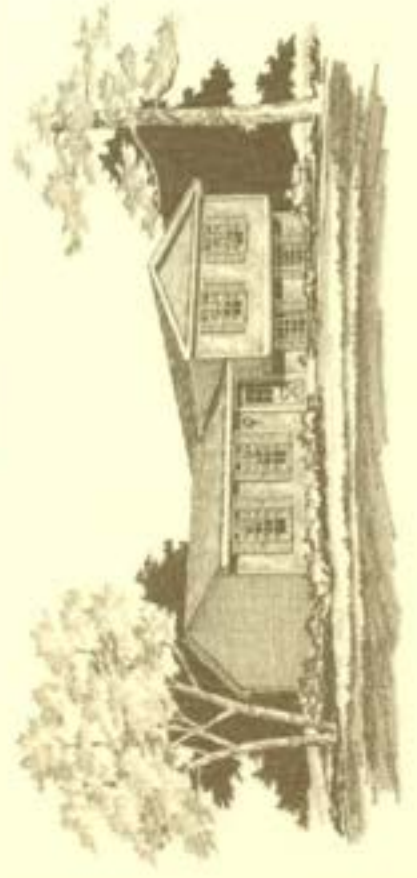
This sheet is for illustrative purposes only and is not part of a legal contract. Floor plans and standard features may vary according to lot and alternate style selected, and are subject to change without notice. Optional items indicated are available at additional cost.

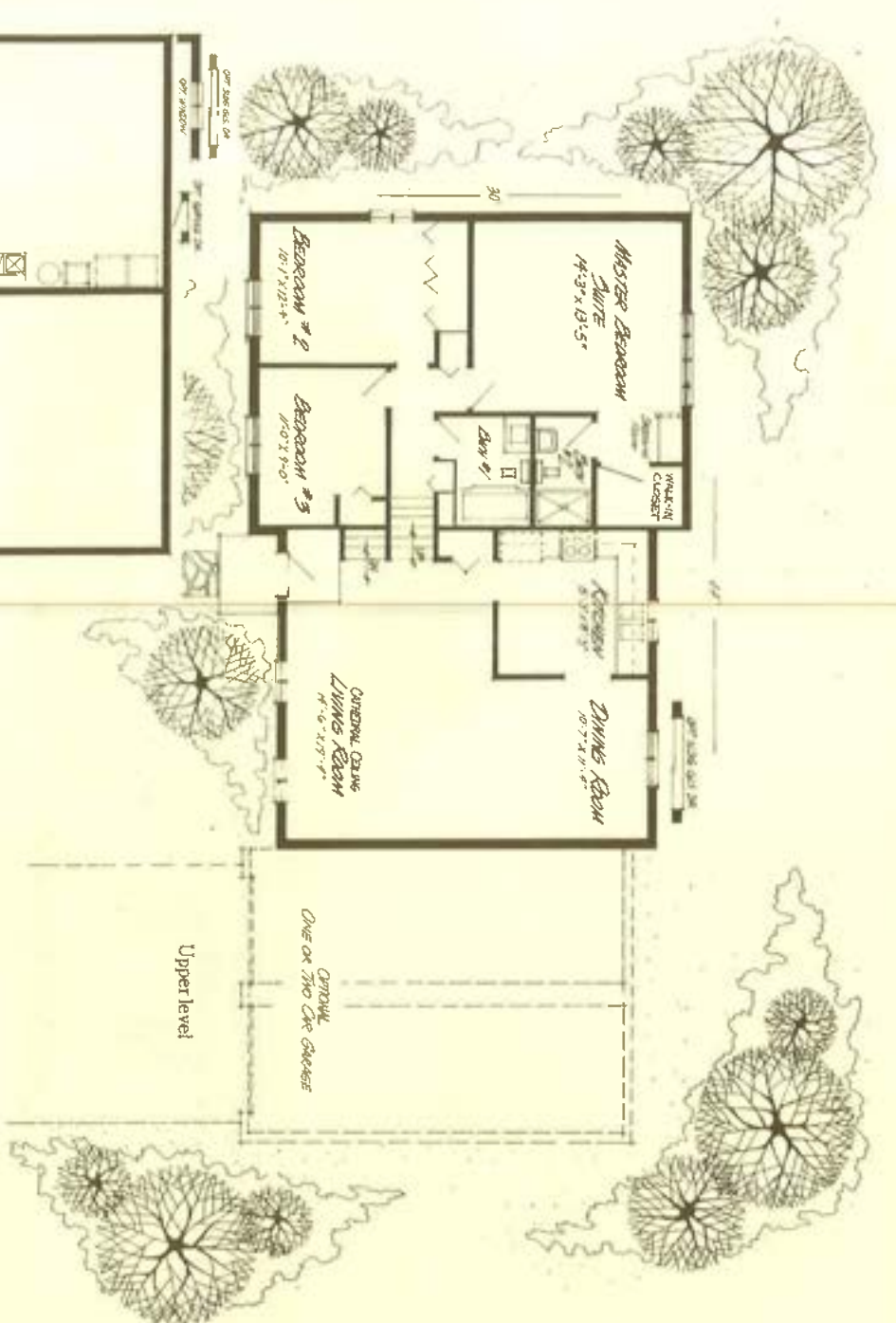


The Arlington



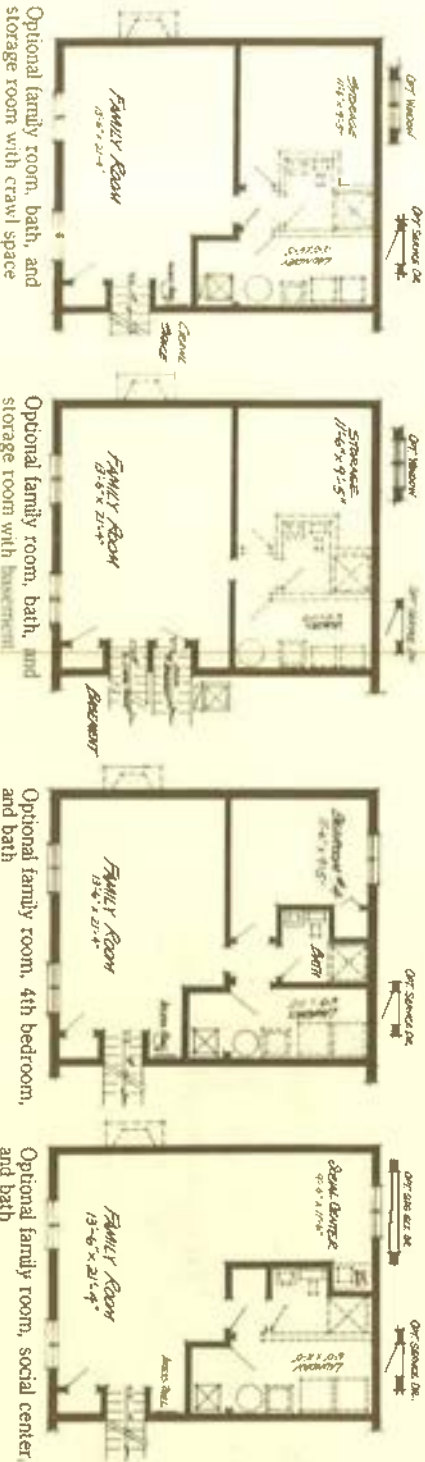
Traditional





Unfinished lower level

Upper level



The Arlington

This superb split-level is designed to help you make your life-style highly flexible, with beautiful standard features and options.

In the upper levels are three bedrooms, including a master suite with its own shower bath and dressing room, in addition to a full bath with vanity. The spacious living-dining rooms are adjacent to a kitchen which includes a breakfast area, oven/range and custom cabinets. You'll find the added luxury of walk-to-wall carpet in living and dining rooms, bedrooms, hall, and on stairs.

The lower level gives you a choice of an unfinished basement, with options for a family room and powder room. There's also the choice of family room, fourth bedroom with standard powder room or optional shower bath. For those who entertain, the family room with optional social center and wet bar is available.

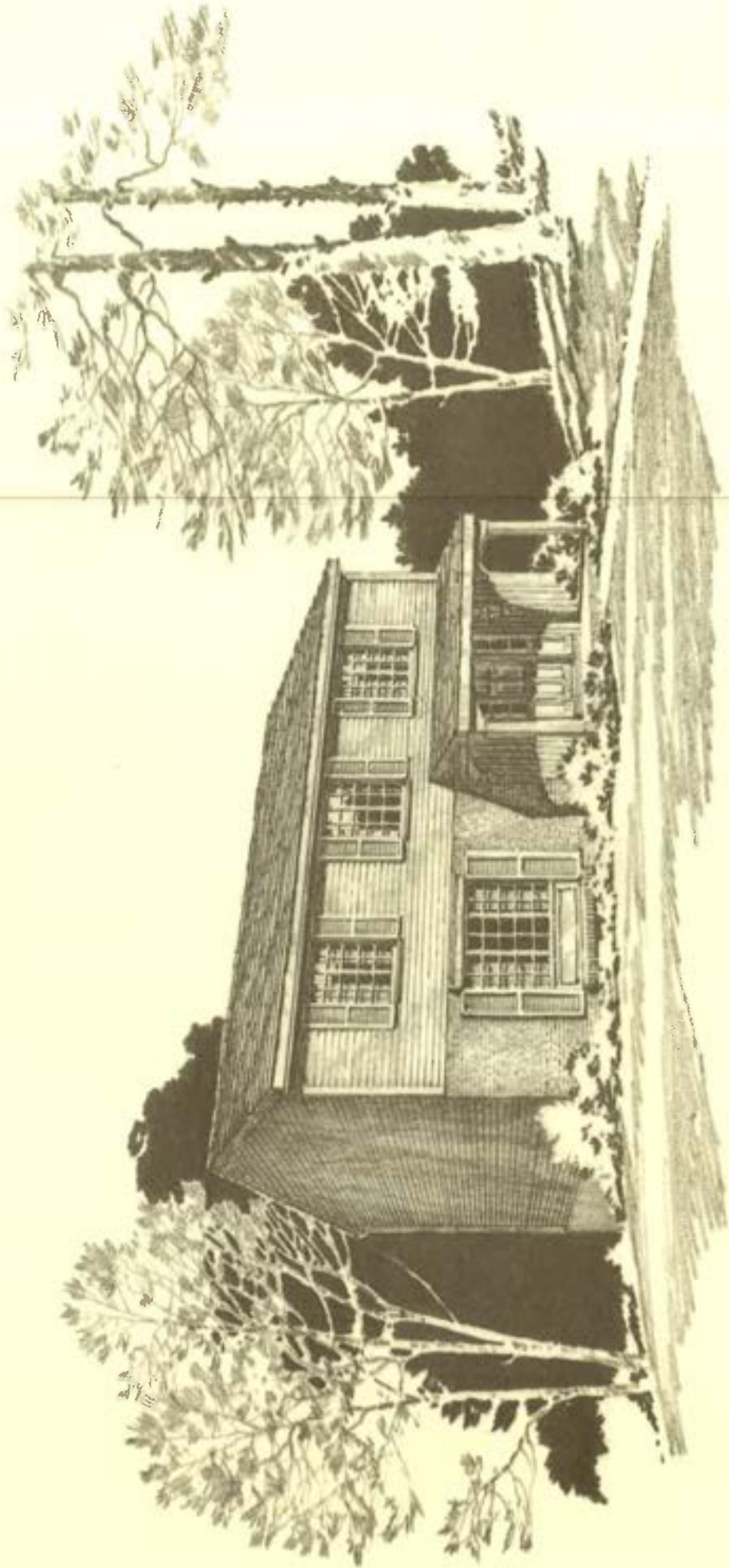
The Arlington is super-sealed and insulated our special way to save energy. We also make pre-settlement and six-month service inspections, for your satisfaction.

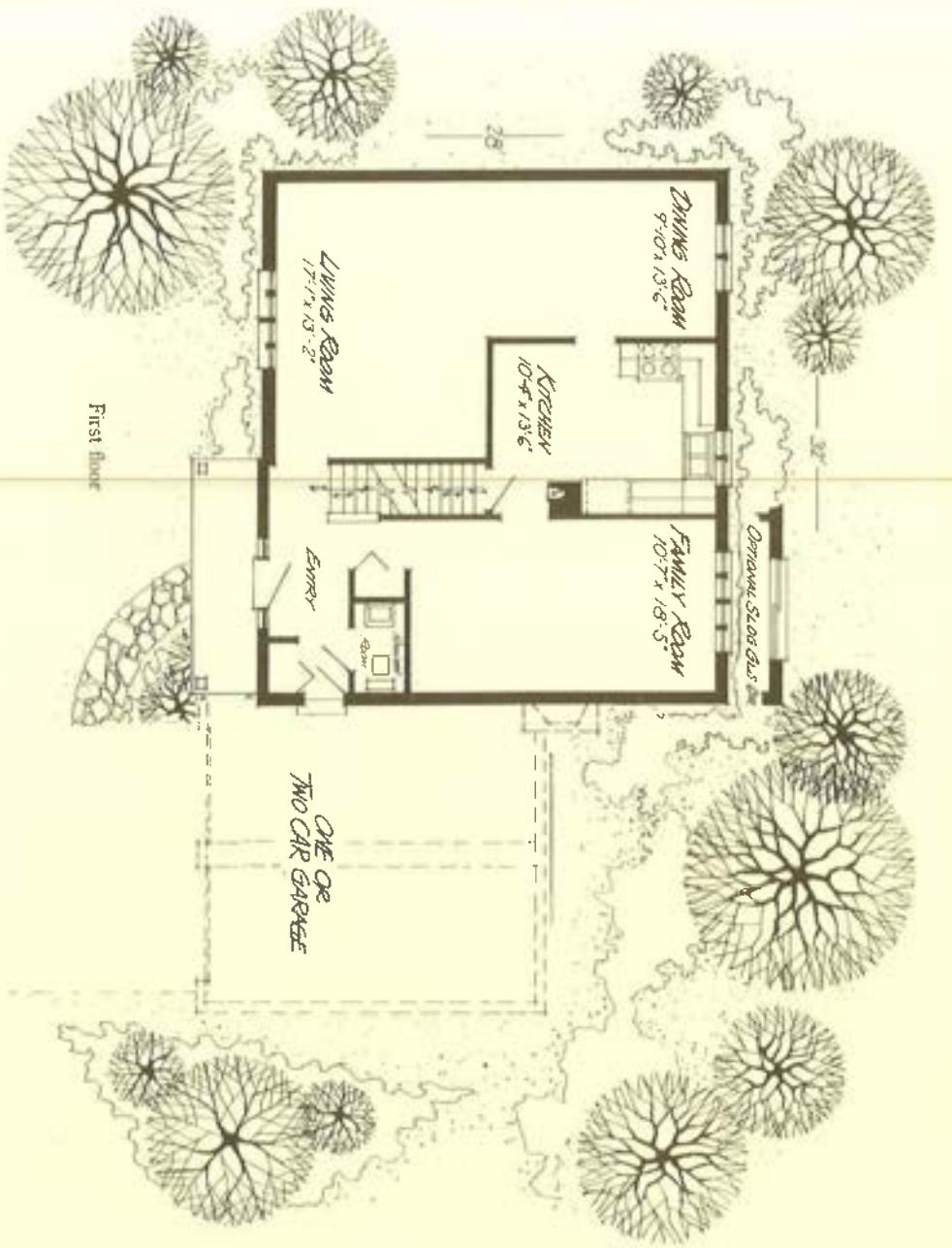
 Ryan Homes, Inc.

This sheet is for illustrative purposes only and not part of a legal contract. Floor plans and standard features may vary according to alternate style selected and are subject to change without notice. Optional items indicated are available at additional cost.



The Bedford





The Bedford

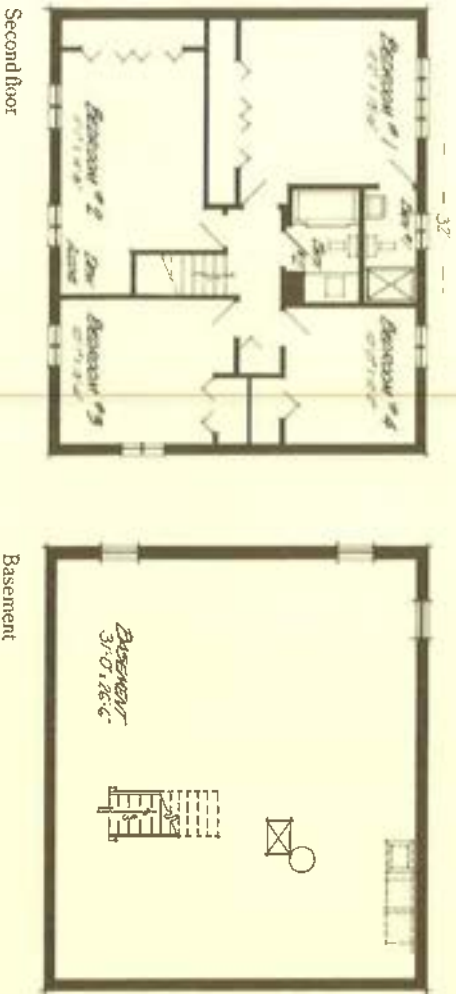
This fine two-story is a family home in every sense of the word. Four bedrooms, a full bath and master bedroom shower/bath takes care of second-floor traffic most effectively.

On the first floor, there's a powder room off the entry which leads to spacious living and dining areas. The kitchen is designed for beauty and practicality — with custom cabinetry and an oven/range standard.

For entertaining or just relaxing there's a large family room with an optional fireplace, in addition to a full basement and an optional one or two-car attached garage.

You'll find extra warmth and luxury with wall-to-wall carpet in bedrooms, closets, living room, family room, stairs and dining room. This home is super-sealed and insulated our special way to save energy.* Preshellment and six-month service inspections assure your satisfaction.

*Savings vary. Find out why in the seller's fact sheet on R-values. Higher R-values mean greater insulating power.

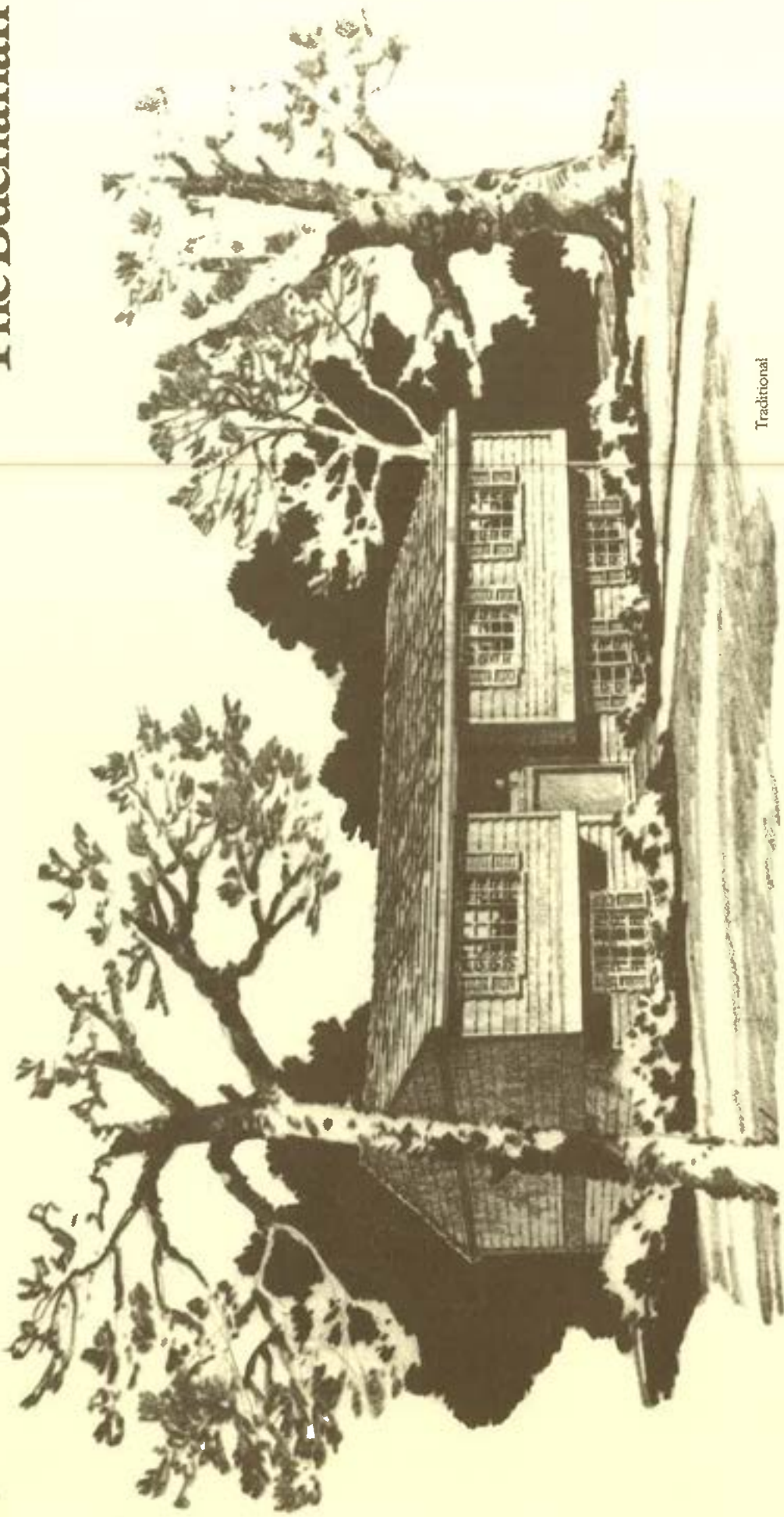


 Ryan Homes, Inc.

This sheet is for illustrative purposes only and not part of a legal contract. Floor plans and standard features may vary according to alternate style selected and are subject to change without notice. Optional items indicated are available at additional cost.



The Buchanan



Traditional



Traditional



Traditional



Tudor

The Buchanan

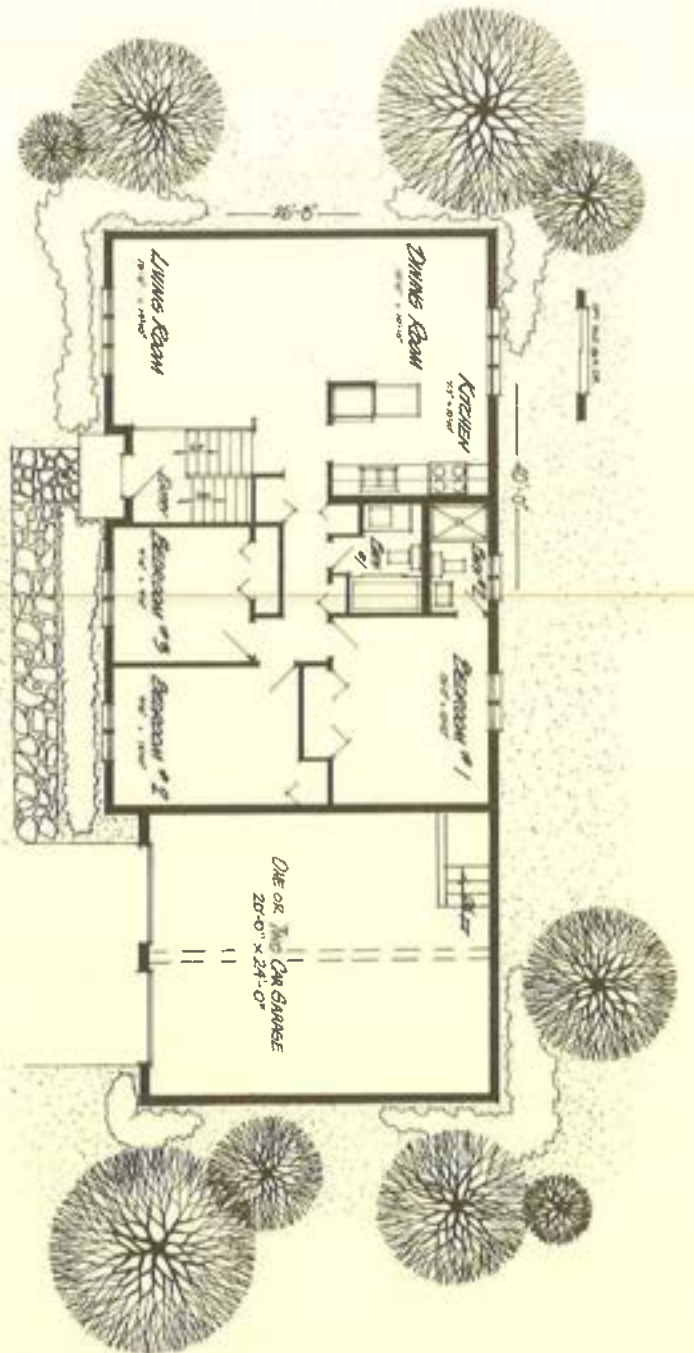
Picture your family enjoying the beauty and practicality of this versatile bi-level home, available in traditional or rustic styling. The pleasant entry leads to a living level designed for your every need. There are three bedrooms, a full bath with vanity, and an option for a shower bath off the master bedroom. Plenty of closet space, too.

Spacious living and dining rooms create an open-flow feeling, with an adjoining kitchen that features an oven/range and custom cabinets. Adding a luxurious touch is wall-to-wall carpet in all bedrooms, living room and hall.

The lower level provides still more choices. There's plenty of basement, storage, utility and laundry space. Or, if you prefer, this level can include an optional finished family room and powder room. You can also have a fireplace in the family room. A one or two-car attached garage or a two-car integral garage is available.

Ryan's Standard Energy Package super-seals and insulates your home against the elements.* And we make pre-settlement and six-month service inspections to assure your satisfaction.

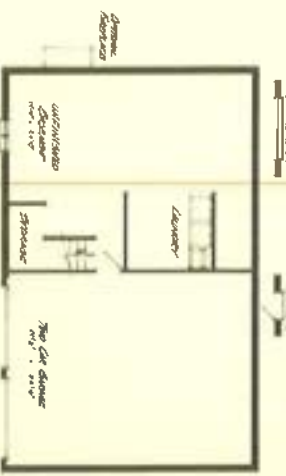
*Savings vary. Find out why in the seller's fact sheet on R-Values. Higher R-Values mean greater insulating power.



Upper level, 2 beths



Standard Upper level



Unfinished lower level and two-car integral garage



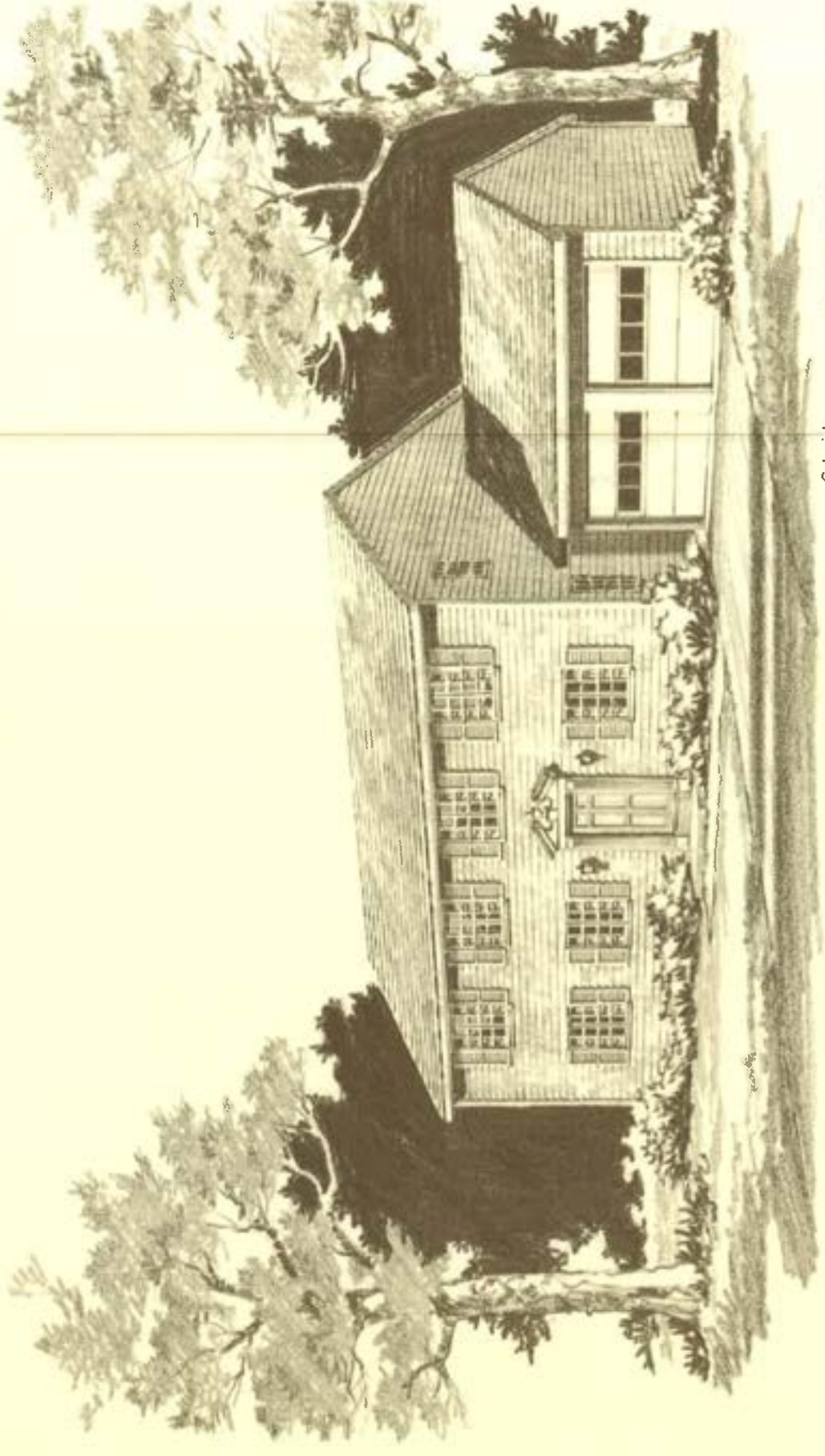
Lower level with finished family room and optional powder room



This sheet is for illustrative purposes only and not part of a legal contract. Floor plans and standard features may vary according to alternate style selected and are subject to change without notice. Optional items indicated are available at additional cost.

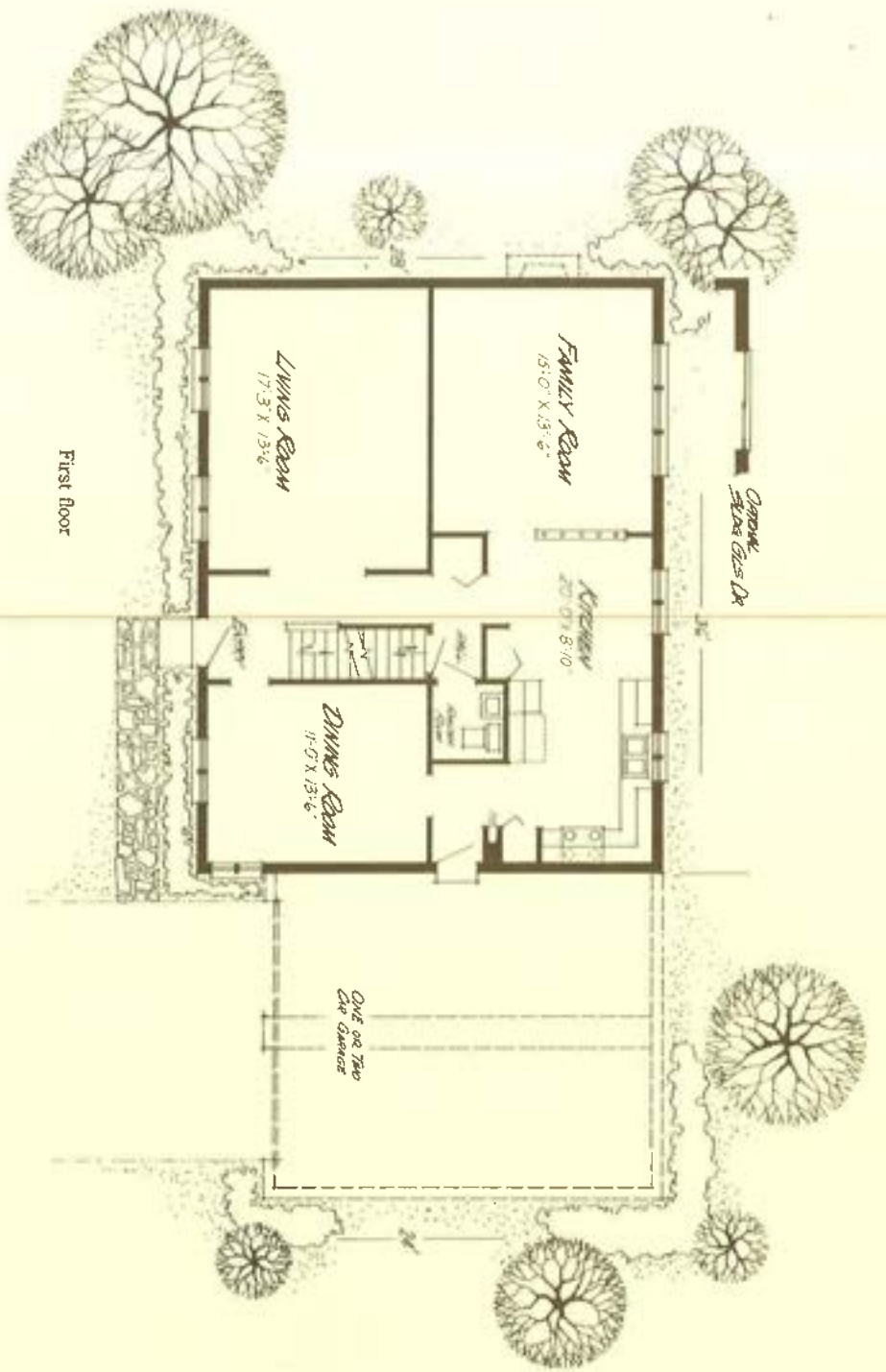


The Buxton

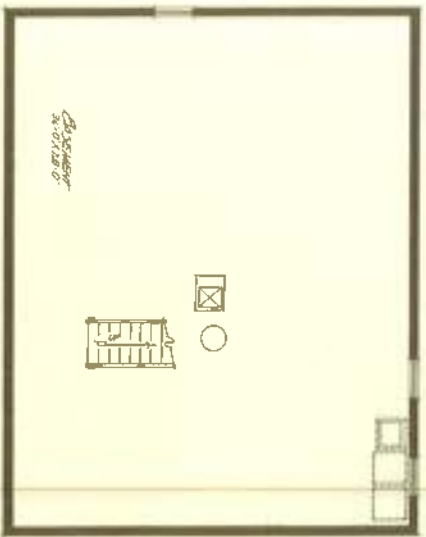


Colonial





First floor



Basement



Second floor

The Buxton

Stately charm lends a special feeling of elegance to this outstanding two-story home. Formality is the keynote as you enter the Buxton. A large living room is to one side, a formal dining room to the other side of the entry foyer.

A real family sized family room is the center for relaxed living in the Buxton. It adjoins the spacious kitchen area which features a large dinette and pantry. The powder room is in a central location between the foyer and kitchen.

An attractive master suite with shower bath is featured on the second floor. All the convenience, storage and privacy a master suite should have is designed into this one. Three other bedrooms and a bath complete the upstairs. Of course all are carpeted, as are the living room, family room and dining room downstairs.

This home has options for a one or two-car attached garage.

The Buxton is super-sealed and insulated our special way to save energy. And there's a presettlement and six-month service inspection.

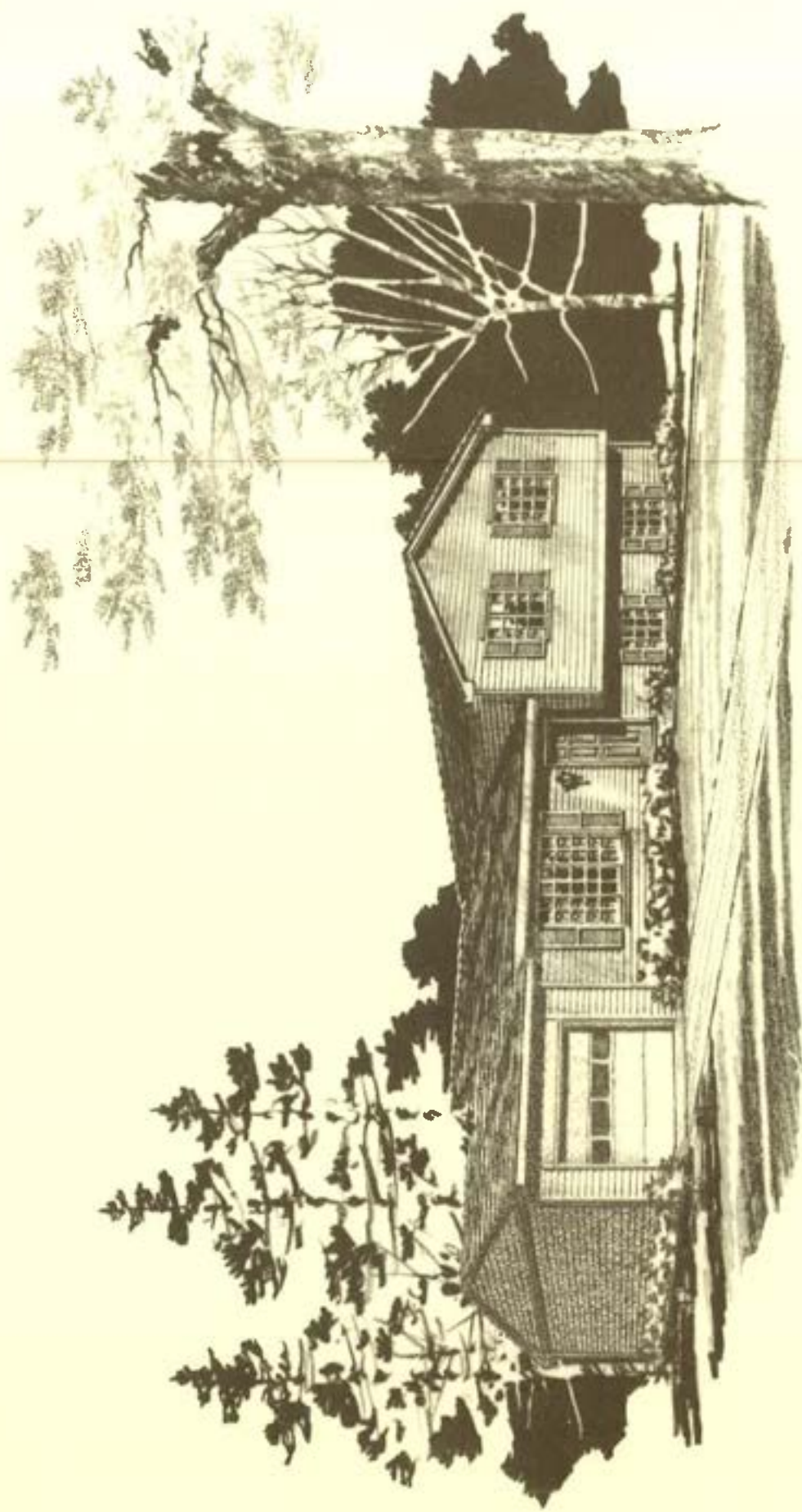
 Ryan Homes, Inc.

This sheet is for illustrative purposes only and not part of a legal contract. Floor plans and standard features may vary according to alternate style selected and are subject to change without notice. Optional items indicated are available at additional cost.



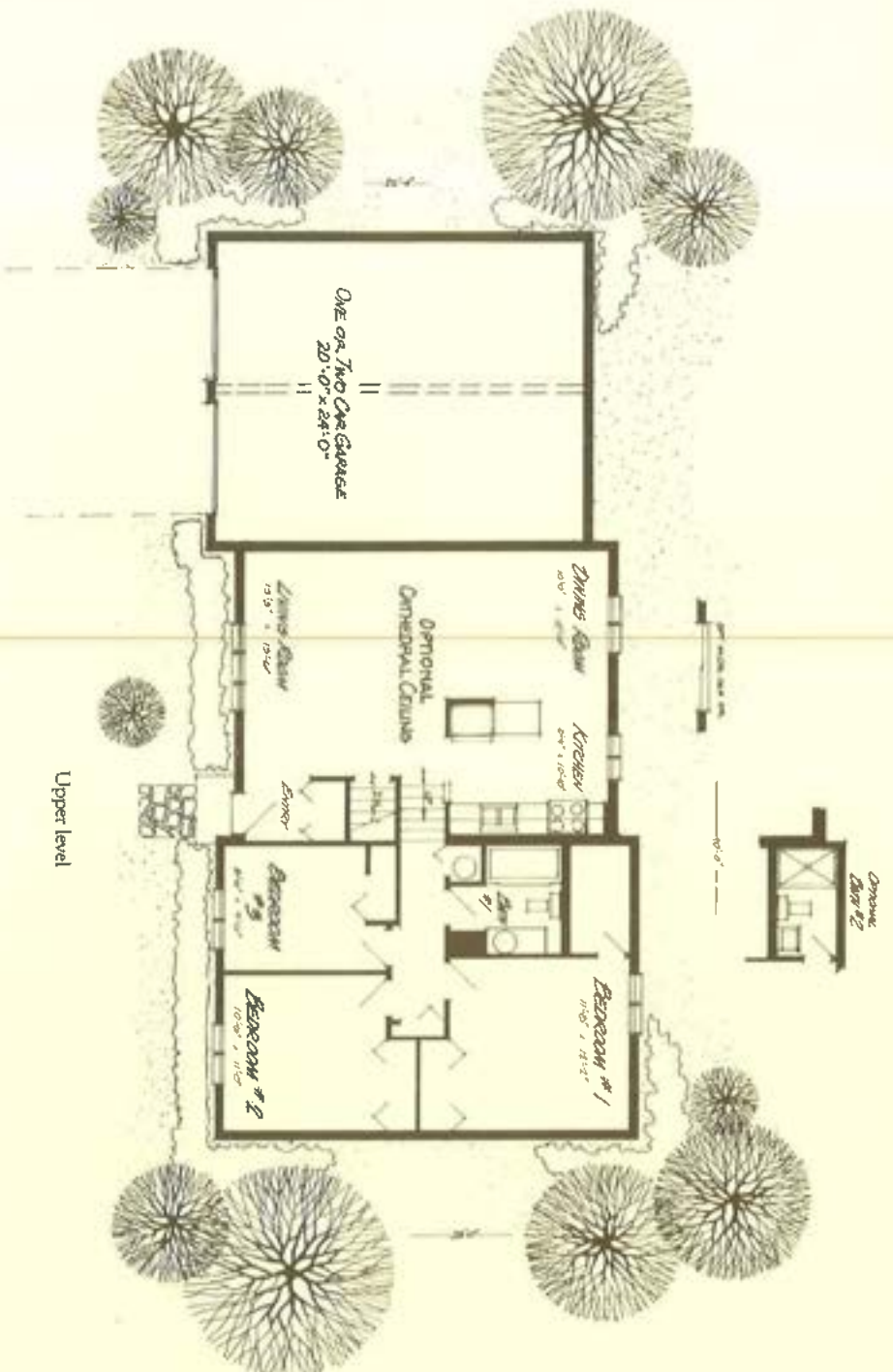
Equal Housing Opportunity

The Chamberlain

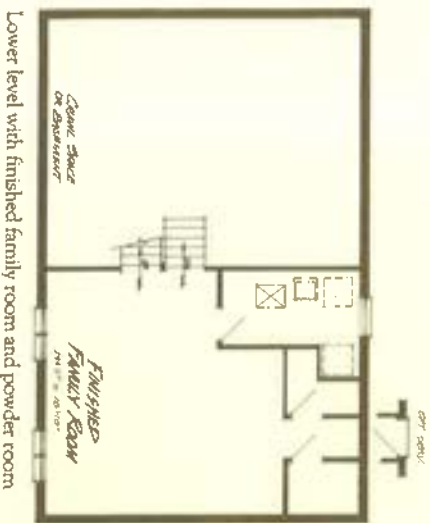


Traditional

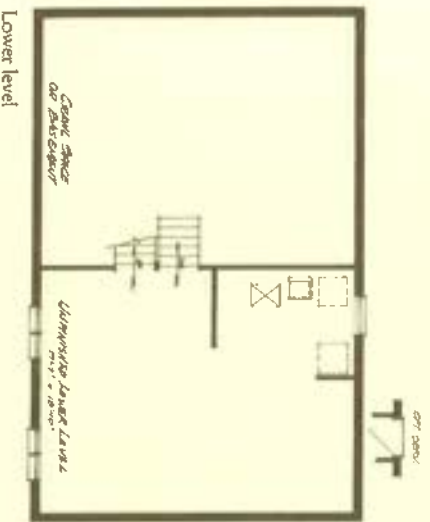




Upper level



Lower level with finished family room and powder room



Lower level

The Chamberlain

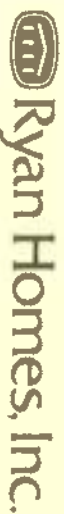
Convenience and livability are highlighted in this attractive split-level home, designed to make the most of traffic patterns.

There's a handy guest closet off the entry at the living level. Featured in this area are spacious living and dining rooms with optional cathedral ceiling. Also a beautiful kitchen with oven/range and custom cabinets. A few steps up take you to three roomy bedrooms, with a walk-in closet (or optional shower bath) off the master bedroom. There's also a full bath with vanity.

The basement features plenty of storage, laundry and utility space. There's room here, too, for an optional finished family room. And this home includes wall-to-wall carpet in the living room, bedrooms and hall, for added luxury.

The Chamberlain can be built with a one or two-car garage. Ryan's Standard Energy Package super-seals and insulates your home against the elements.* Pesticide and six-month service inspections assure your complete satisfaction.

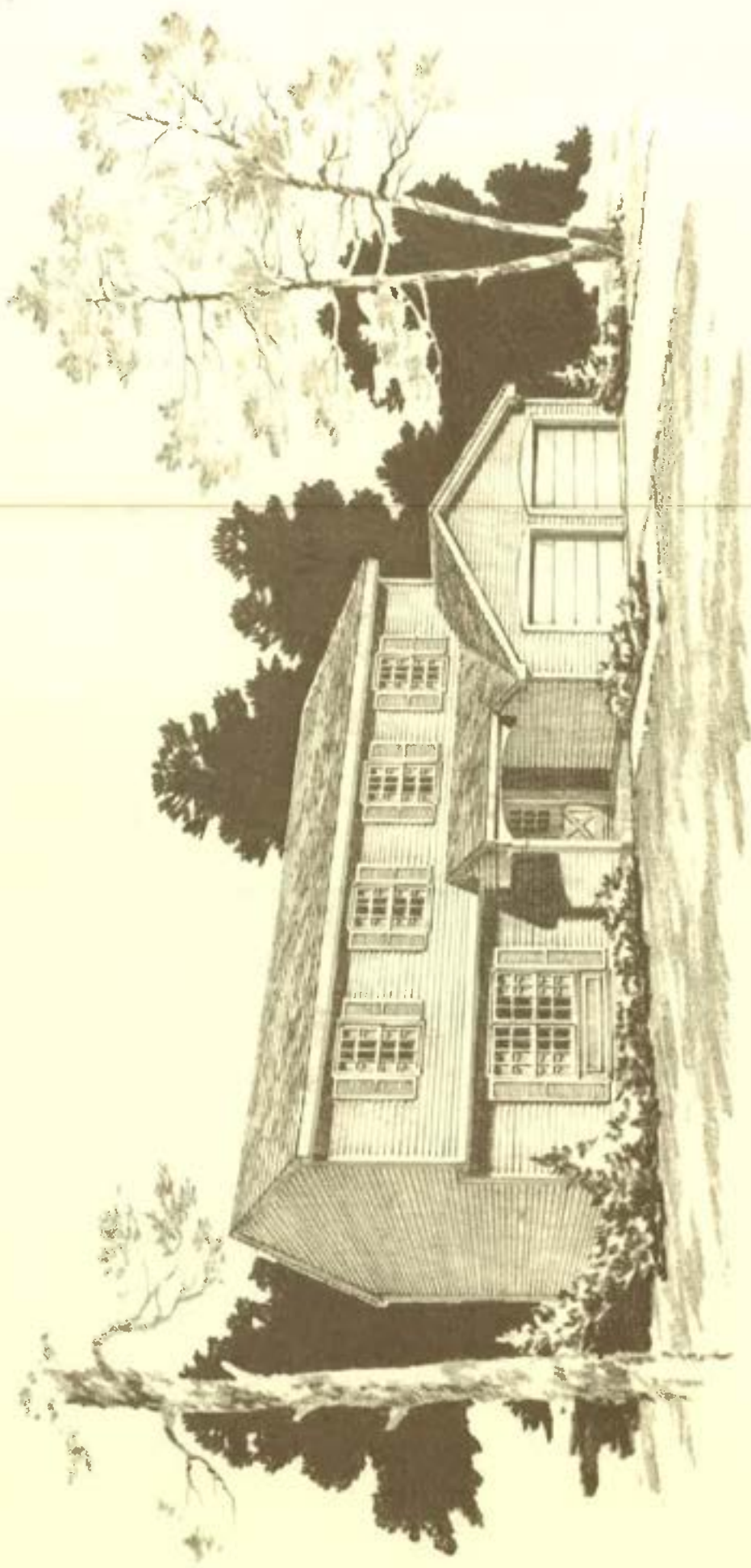
*Savings vary. Find out why in the seller's fact sheet on R-Values. Higher R-Values mean greater insulating power.



This sheet is for illustrative purposes only and not part of a legal contract. Floor plans and standard features may vary according to alternate style selected and are subject to change without notice. Optional items indicated are available at additional cost.



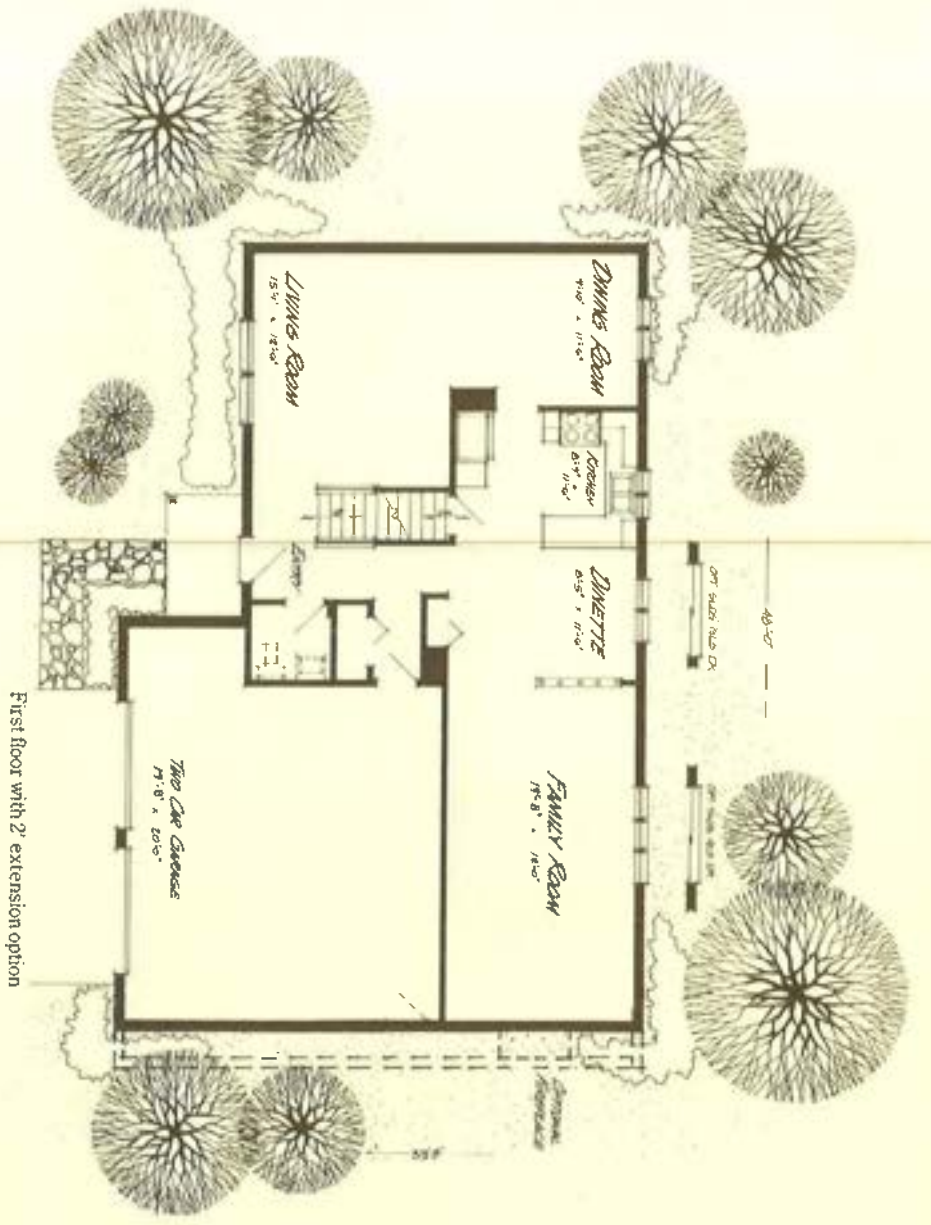
Listed on Maggie List
The Bunker Hill "A"



Traditional



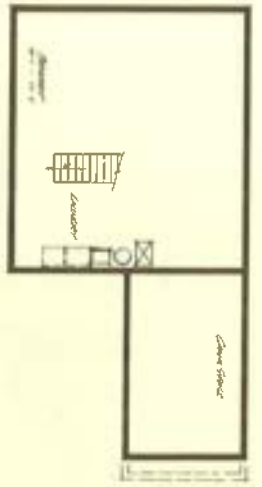
Colonial



First floor with 2' extension option



Second floor with 3 bedrooms, master suite and 2 baths.



Unfinished basement

The Bunker Hill "A"

Here's a beautiful two-story home designed to provide increased flexibility for a variety of family living preferences. It's standard with a basement and a two-car garage.

The first floor includes a porched entry, guest closet and spacious living-dining rooms. The kitchen has an oven/range, custom cabinets and a dinette which leads into a large family room with fireplace option.

On the second floor are three large bedrooms and full bath with vanity—plus a master bedroom suite with its own dressing room, vanity and walk-in closet and a shower bath off the master suite. Luxurious wall-to-wall carpet adds even more warmth and elegance to bedrooms, living-dining rooms, family room and closets.

The Bunker Hill "A" is super-sealed and insulated our special way to save energy and help reduce utility bills. To assure your satisfaction, we make pre-settlement and six-month service inspections.



This sheet is for illustrative purposes only and not part of a legal contract. Floor plans and standard features may vary according to alternate style selected and are subject to change without notice. Optional items indicated are available at additional cost.

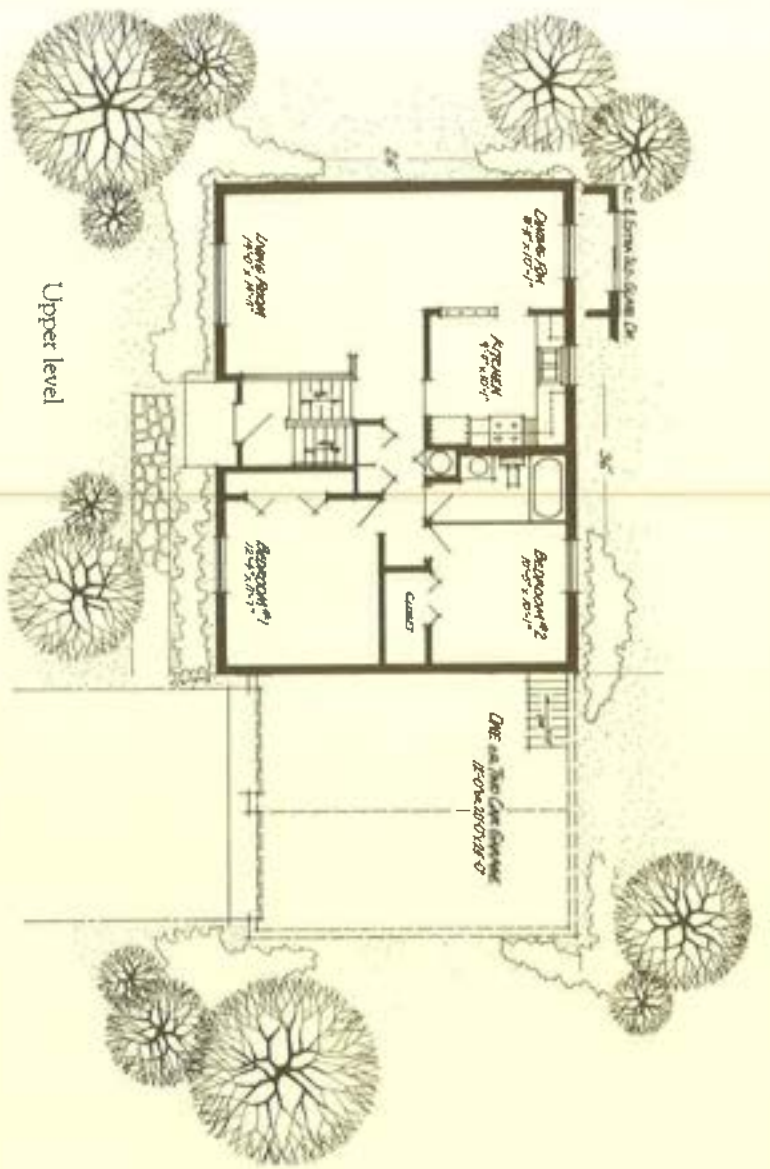


The Dominion

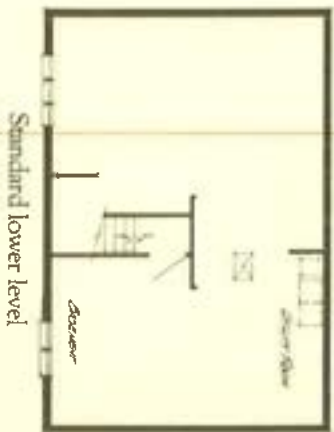


Colonial

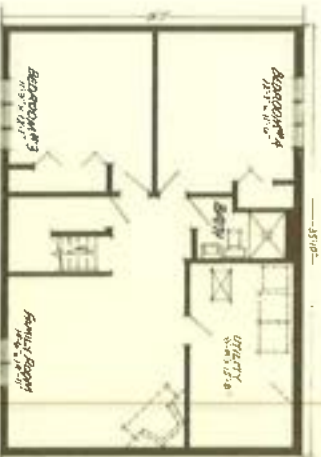




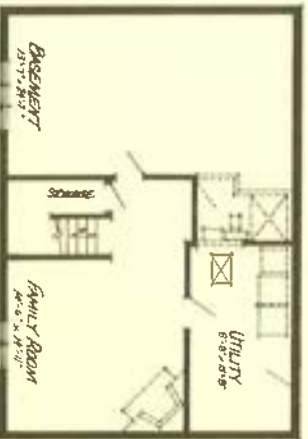
Upper level



Standard lower level



Optional finished lower level with two bedrooms and shower bath.




Finished family room in lower level with optional powder room or shower bath.

The Dominion

This very popular bi-level has been called the "home with the future." On the upper level are two bedrooms and bath standard. The lower level allows for addition of two more bedrooms, a family room and bath as family size and budget permit. It's a way of adding more rooms without "adding on" to the house. Or you can have all four bedrooms, two baths and family room right away as options.

Spacious living-dining areas, and a handy kitchen adjacent to the dining room complete the upper level of the home. An added touch of warmth and luxury comes from wall-to-wall carpet in bedrooms, closets, living room and on stairs.

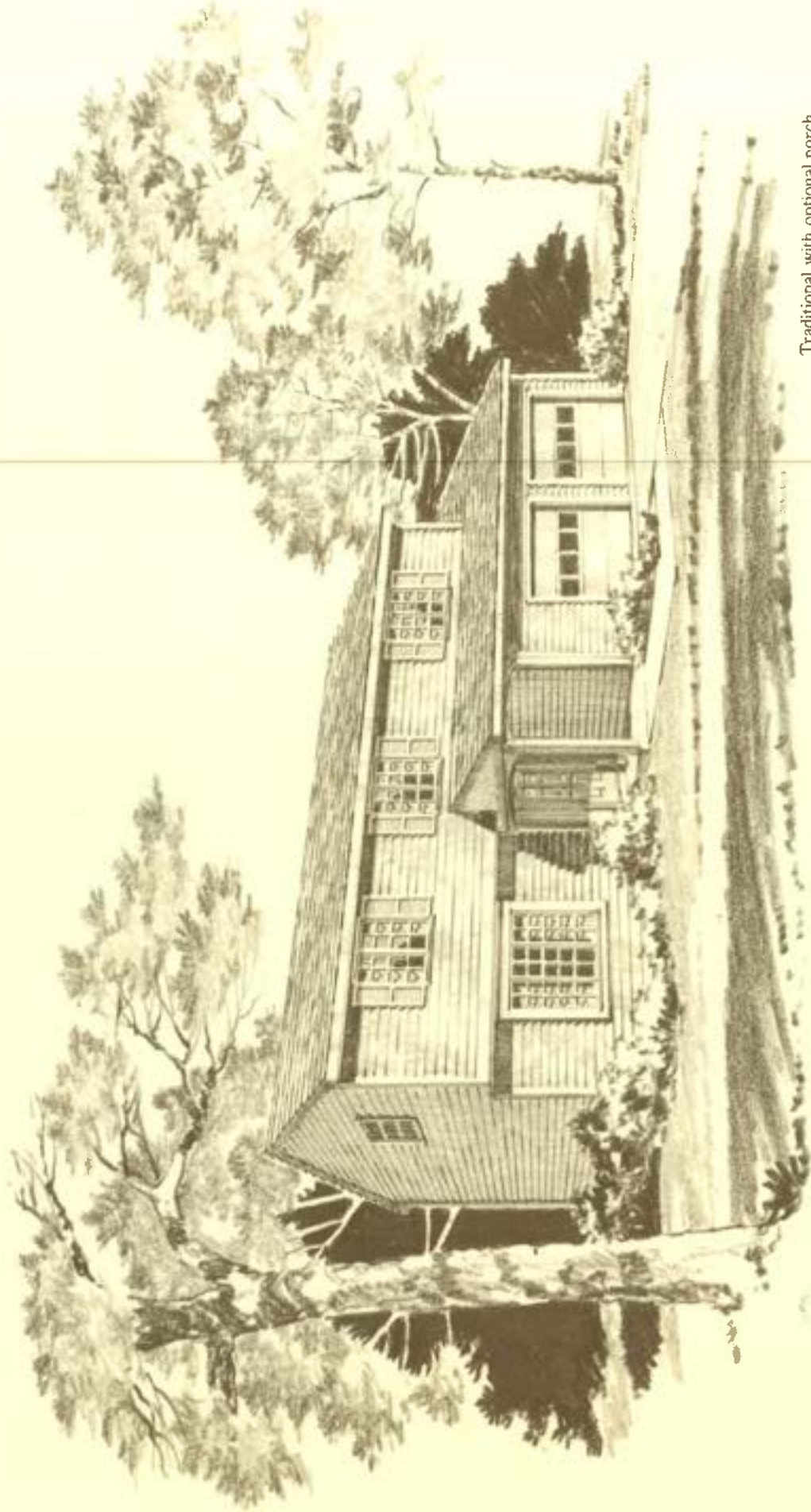
The Dominion also features an optional one or two car garage. The house is super-sealed and insulated our special way to save energy. And we make pre-settlement and six month service inspections, for your satisfaction.

 Ryan Homes, Inc.

This sheet is for illustrative purposes only and not part of a legal contract. Floor plans and standard features may vary according to alternate style selected and are subject to change without notice. Optional items indicated are available at additional cost.

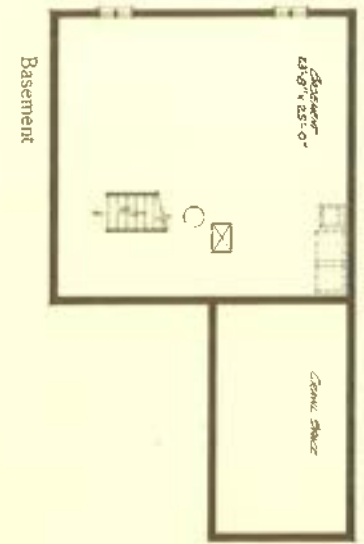
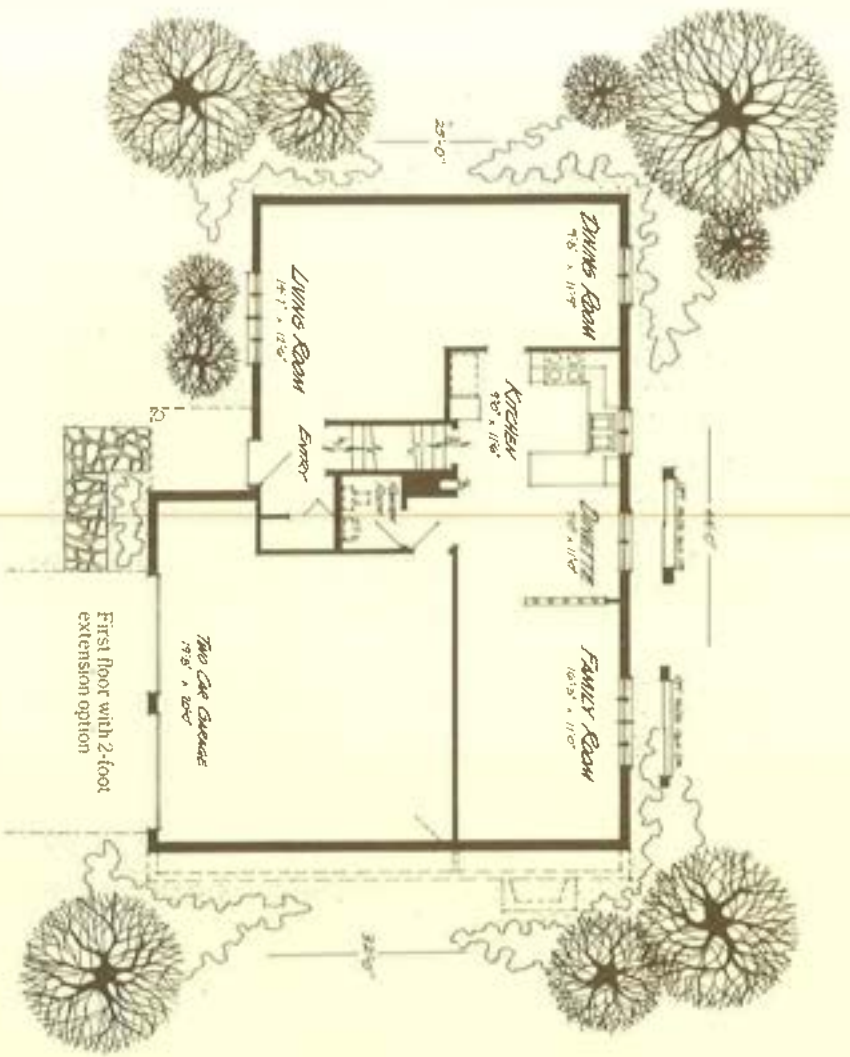


The Dorchester "B"



Traditional with optional porch





The Dorchester "B"

This handsome two-story is designed for the active family, and offers the flexibility needed to accommodate families of various sizes.

The first-floor plan includes a spacious entry with optional powder room. The large living-dining area lends itself to formal entertaining. Adjacent to the roomy kitchen is a separate dinette and a big family room for both quiet and fun times.

The second floor features four bedrooms including an extra-large master suite with its own dressing room, walk-in closet and shower-bath. This home includes wall-to-wall carpet in bedrooms, closets, dining and living rooms.

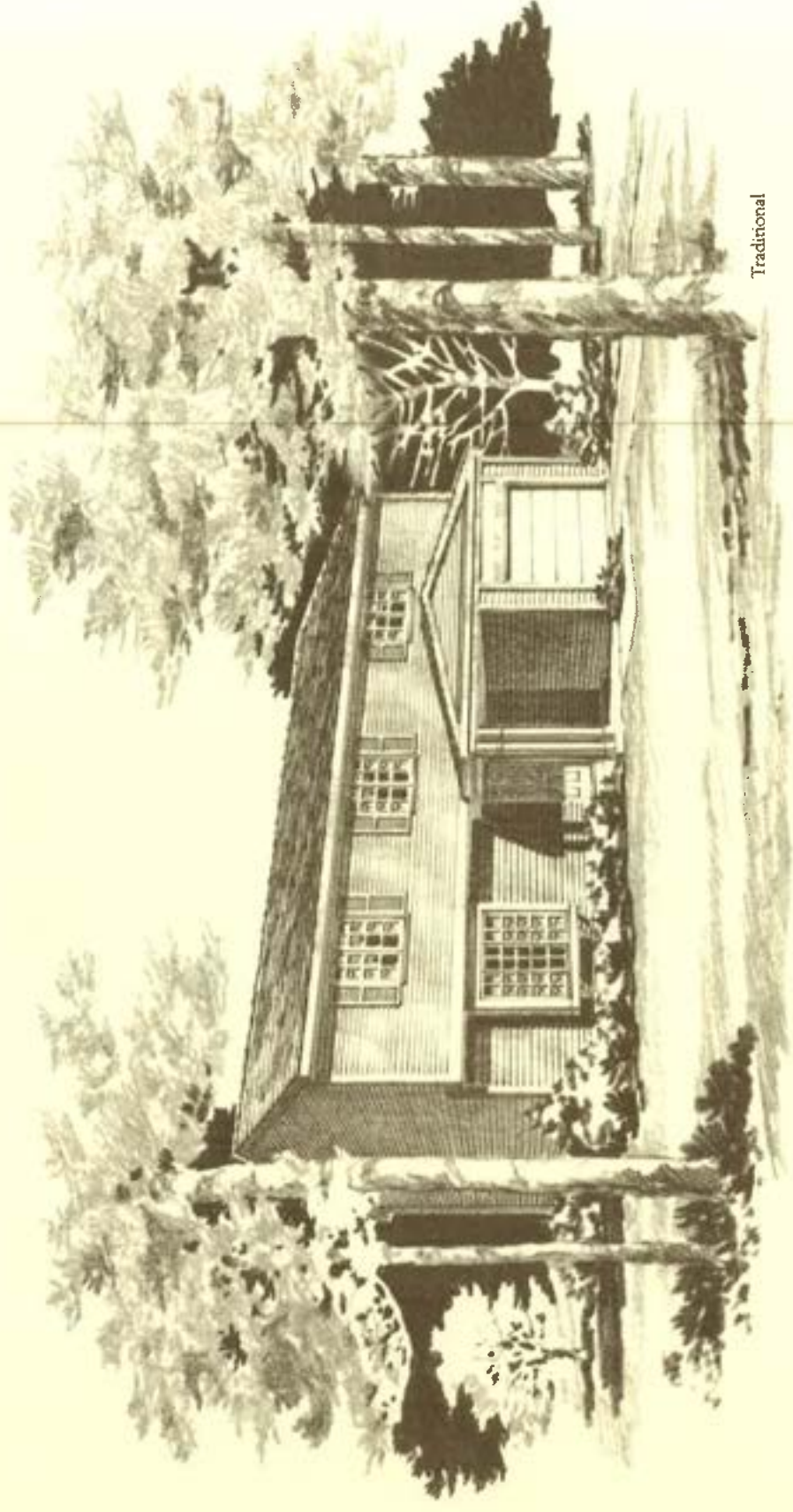
The Dorchester is super-sealed and insulated our special way to save energy. We make pre-settlement and six-month service inspections for your satisfaction.



This sheet is for illustrative purposes only and not part of a legal contract. Floor plans and standard features may vary according to alternate style selected and are subject to change without notice. Optional items indicated are available at additional cost.



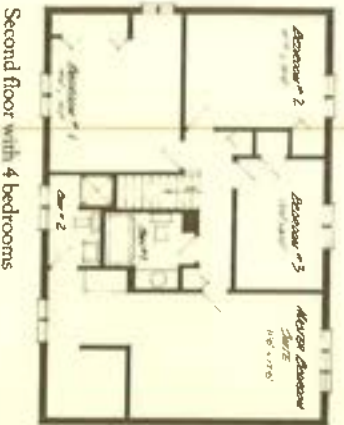
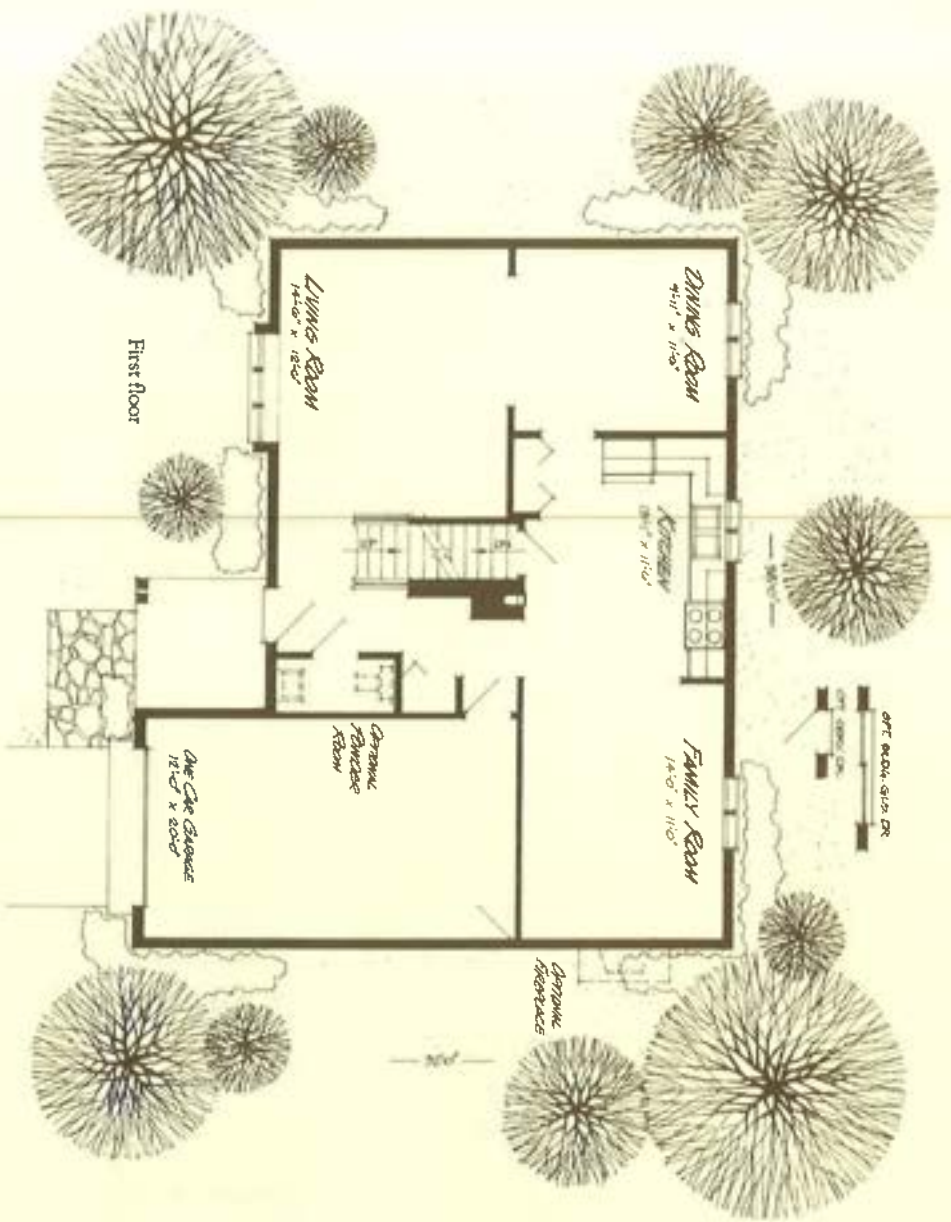
The Hartford



Traditional



Colonial




The Hartford

This two-story home, with one-car attached garage, combines practicality and luxury for imaginative, convenient living.

Near the entry foyer is a large guest closet, with an option for a handy powder room. Spacious living and dining rooms are ideal for formal entertaining. A beautiful kitchen with oven/range, custom cabinets and pantry makes family time—or guest time—memorable. The kitchen leads into a handsome family room where you have the option of a woodburning fireplace.

Upstairs are four bedrooms and a full bath with vanity. The master bedroom suite has its own private shower bath, dressing room and walk-in closet. Our alternate three-bedroom plan also offers a cozy sitting room next to the master suite.

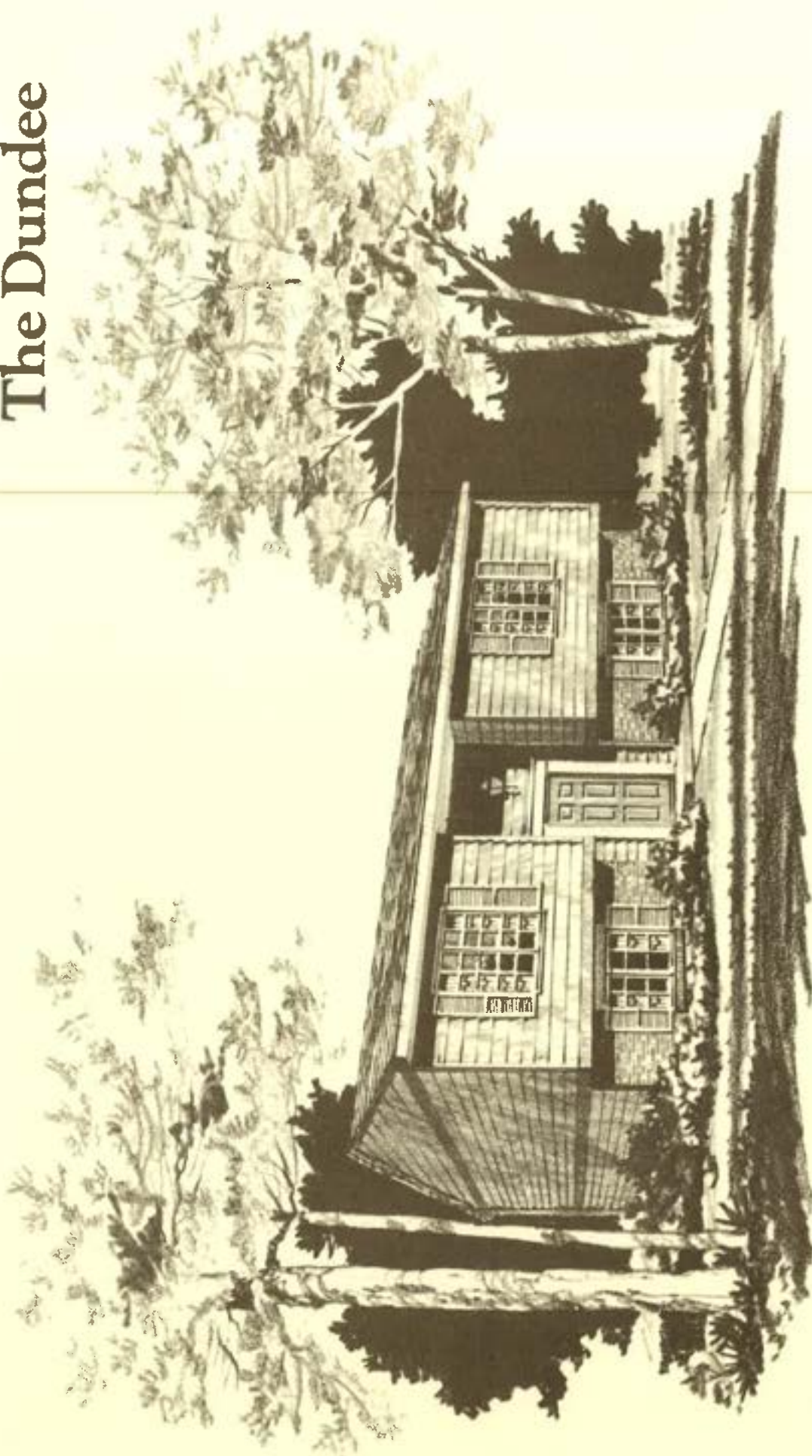
Enhancing the beauty of this home is wall-to-wall carpeting in living, dining and family rooms, on stairs; also in bedrooms and upstairs hallway and closets. The Hartford is super-sealed and insulated our special way to help save energy. And we make pre-settlement and six-month service inspections to assure your satisfaction.

 Ryan Homes, Inc.

This sheet is for illustrative purposes only and not part of a legal contract. Floor plans and standard features may vary according to alternate styles selected and are subject to change without notice. Optional items indicated are available at additional cost.



The Dundee



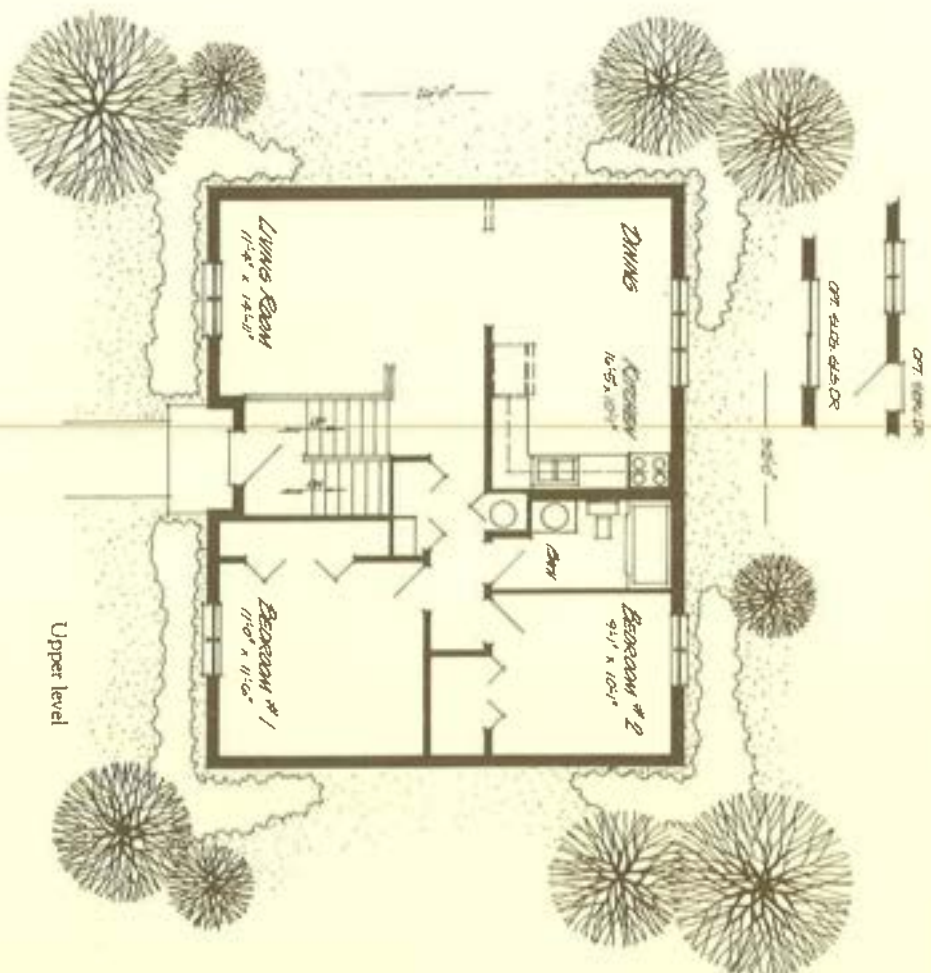
Traditional



Traditional



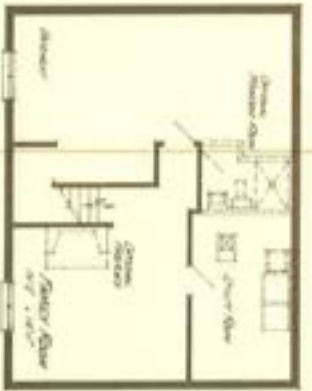
Traditional



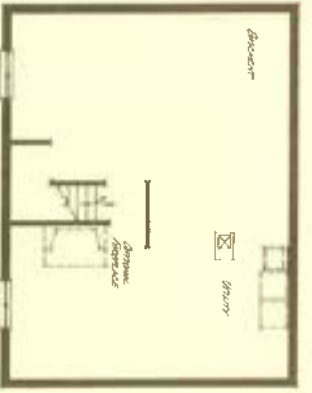
Upper level



Finished basement



Basement with finished family room



Unfinished basement

The Dundee

This versatile bi-level home is perfect for the young, active family. The Dundee's attractive exterior features imaginative styling and low-maintenance materials.

An excellent floor plan provides two large bedrooms, full bath with vanity, living room, and dining room with adjoining kitchen on the upper level. The kitchen is both beautiful and practical, with handsome cabinets and maple cutting board.

A few steps down, you'll find a full basement or options for two more bedrooms plus bath and family room. Also extra storage space. An optional one-car garage* adds to the versatility of this beautiful home.

Ryan's Standard Energy Package super-seals and insulates your home against the elements.* And, of course, there's wall-to-wall carpeting in bedrooms, closets, living room and on stairs. Pre-settlement and six-month inspections are made for your satisfaction.

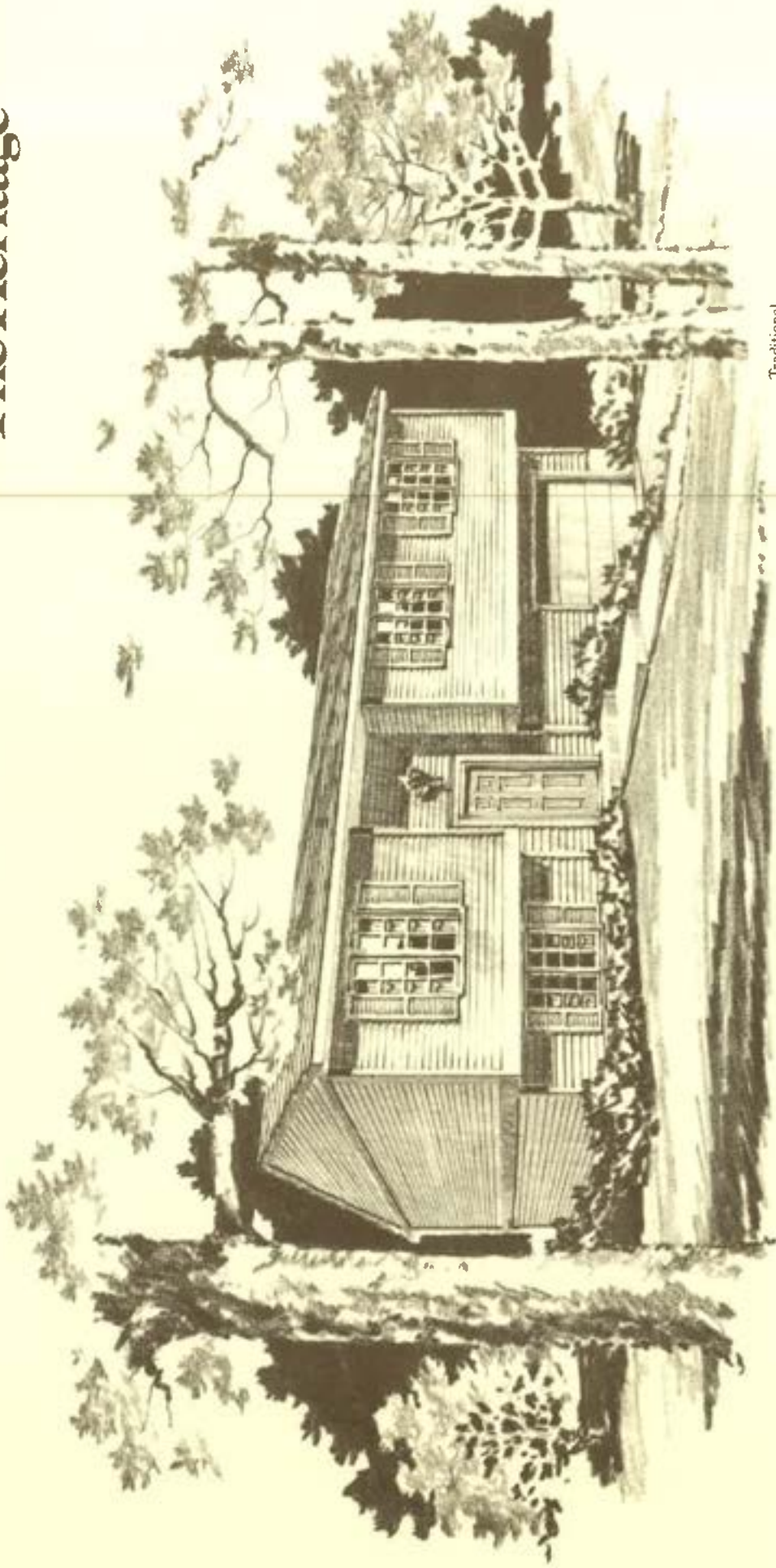
*Savings vary. Find out why in the seller's fact sheet on R-values. Higher R-values mean greater insulating power.



This sheet is for illustrative purposes only and is not part of a legal contract. Floor plans and standard features may vary according to lot and alternate style selected, and are subject to change without notice. Optional items indicated are available at additional cost.



The Heritage



Traditional



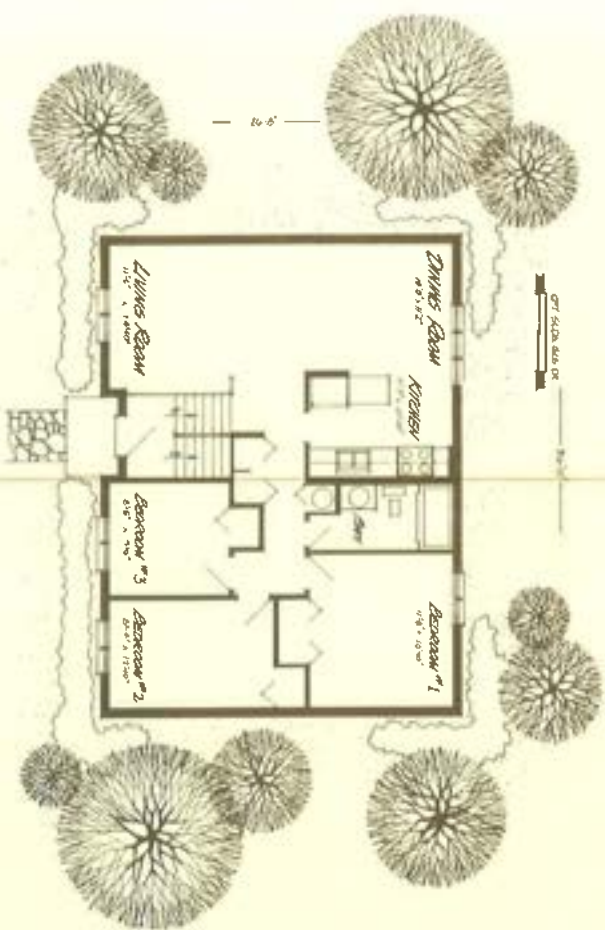
Rustic



Traditional



Traditional



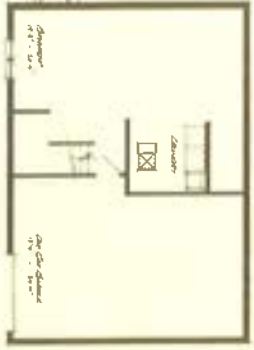
Upper Level



Lower Level with rear integral garage



Lower level with family room and rear integral garage



Lower level with front integral garage



Lower level with family room and front integral garage

Heritage

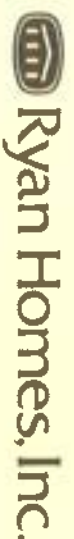
This handsome bi-level, available in traditional and rustic exterior styling, is planned with beauty and versatility in mind.

There's plenty of room for the most active family. On the upper level are three large bedrooms and a full bath. Plus a living room and dining room adjoining the kitchen which features custom cabinets and oven/range.

The lower level offers lots of basement, laundry and storage space. This level can be finished with an attractive family room and optional powder room. So our Heritage can be personalized in many ways to fit your family's needs and tastes. A one-car integral garage is standard.

Adding to the luxury of this excellent home is wall-to-wall carpeting in bedrooms, closets, living room, dining room, and on stairs. Ryan's Standard Energy Package super-seals and insulates your home against the elements. * Presentment and six-month service inspections are also made, for your satisfaction.

*Savings vary. Find out why in the seller's fact sheet on R-Values. Higher R-Values mean greater insulating power.

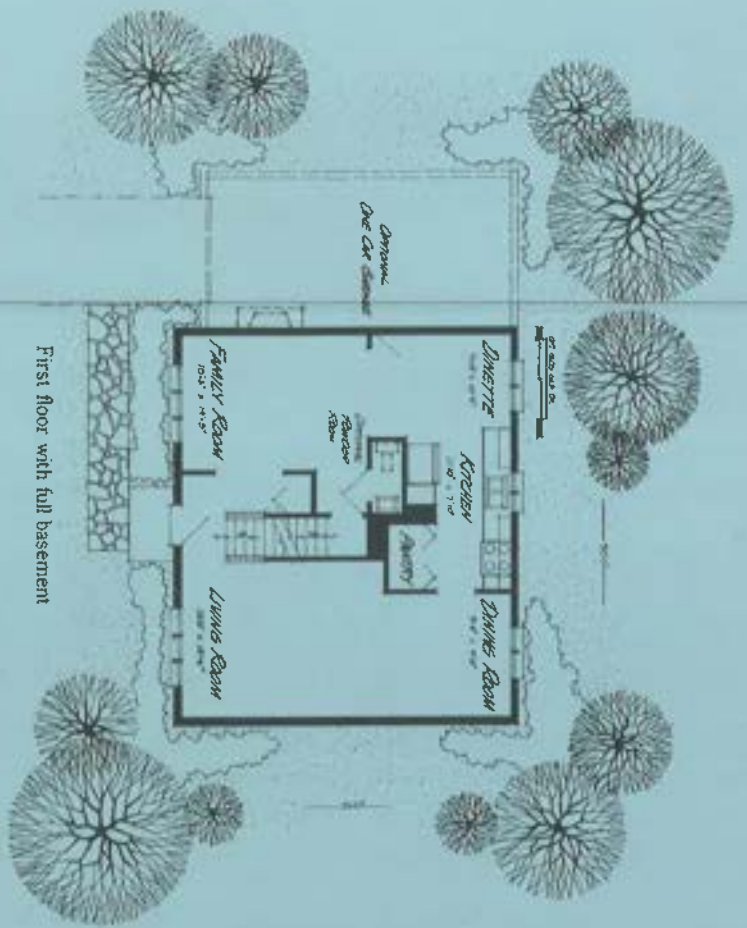


This sheet is for illustrative purposes only and not part of a legal contract. Floor plans and standard features may vary according to alternate style selected and are subject to change without notice. Optional items indicated are available at additional cost.



The Patriot





First floor with full basement



Second floor with 4 bedrooms



Second floor with 3-bedrooms and optional second bath



Basement

The Patriot

Colonial styling sets the mood for fine living in this handsome two-story, with its excellent standard features and options.

The first floor includes spacious living and dining rooms, plus a large family room with a fireplace option. The big kitchen has a convenient pantry, custom cabinets and a dinette. And there's also an option for a powder room on the first floor. Wall-to-wall carpet adds luxury to living-dining areas, family room, bedrooms and closets.

Second-floor plans give you a choice of three or four bedrooms, a full bath, and an optional second bath off the master bedroom. The Patriot lets you choose an optional one car garage. This home is super-sealed and insulated our special way to save energy. Pre-settlement and six-month service inspections assure your complete satisfaction.

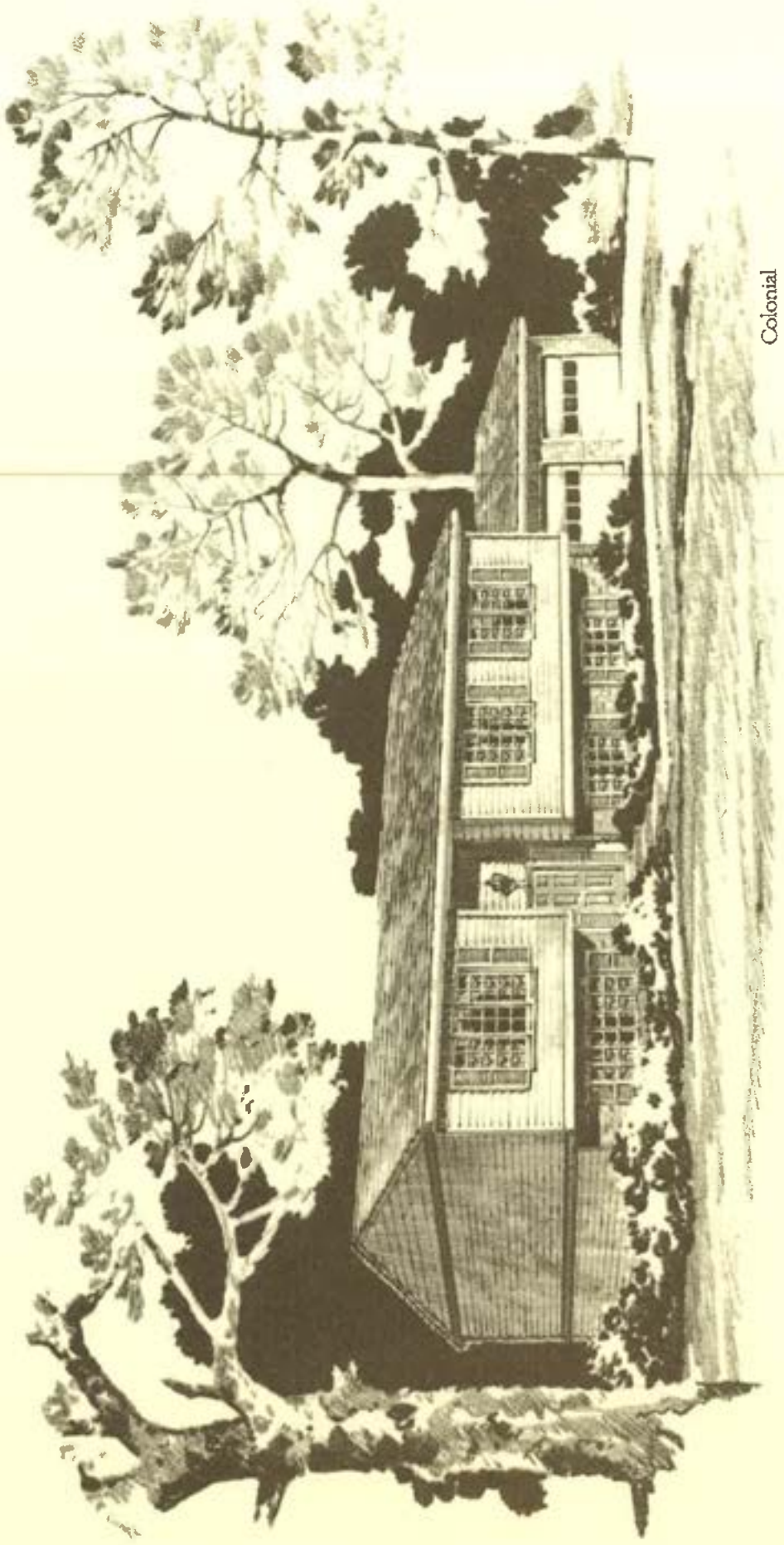
 Ryan Homes, Inc.

This sheet is for illustrative purposes only and not part of a legal contract. Floor plans and standard features may vary according to alternate style selected and are subject to change without notice. Optional items indicated are available at additional cost.



EQUAL HOUSING OPPORTUNITY

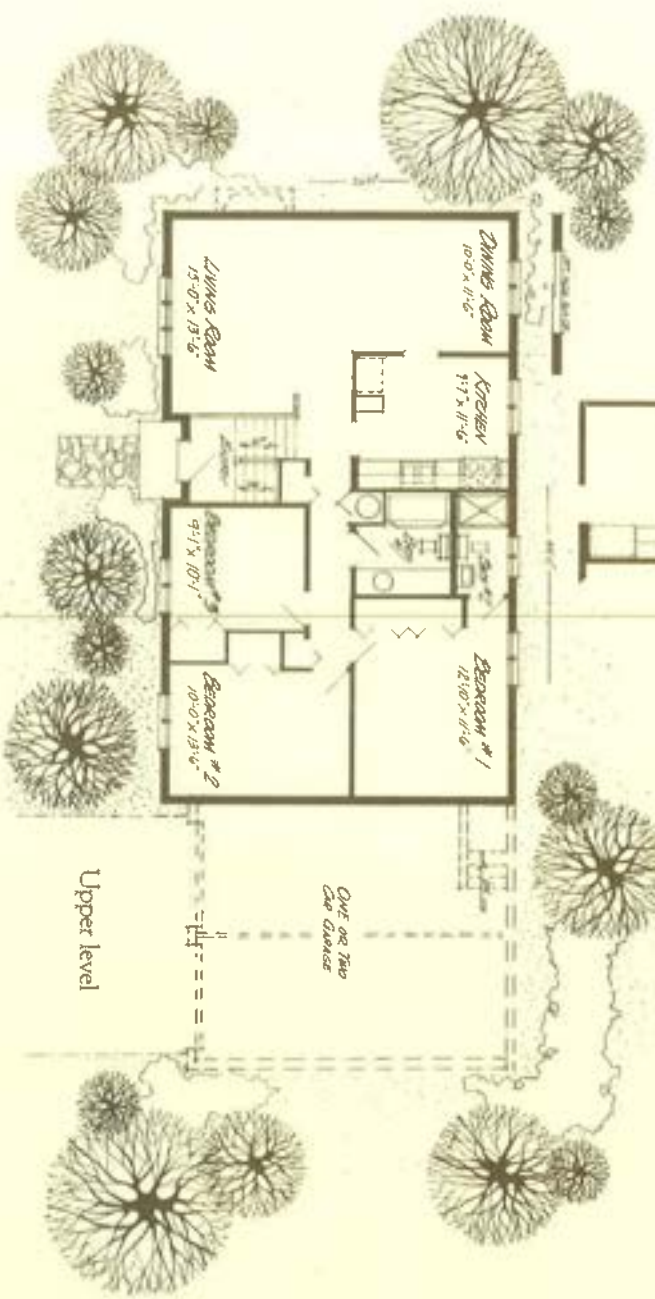
The Rymark



Colonial



Alternate kitchen with 5 bedrooms only



Upper level

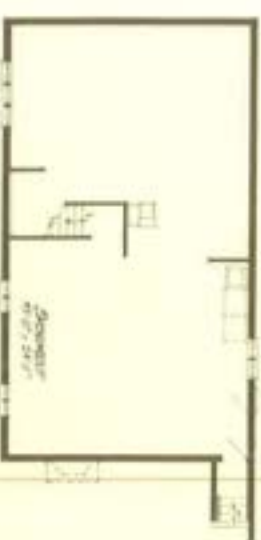
Lower level with integral garage



Lower level with optional family room and integral garage



Lower level with attached garage



Optional lower level with 2 bedrooms and family room plus shower bath with attached garage. Lower level also available with family room only.



The Rymark

This exceptionally popular bi-level has three bedrooms on the upper level. There's a full bath, and a shower off the master bedroom. You'll have plenty of space for family activities in the living-dining area, adjoined by the kitchen with its custom cabinets.

For even more space, you can choose an optional family room or a family room with two bedrooms in the lower level. A powder room or shower bath is also available in the lower level. Wall-to-wall carpet is included in bedrooms, living and dining rooms.

A spacious laundry room area is in the lower level, and The Rymark has a two-car integral garage or optional one or two-car attached garage. Ryan's Standard Energy Package super-seals and insulates your home against the elements.* Pre-shipment and six-month service inspections are made, for your satisfaction.

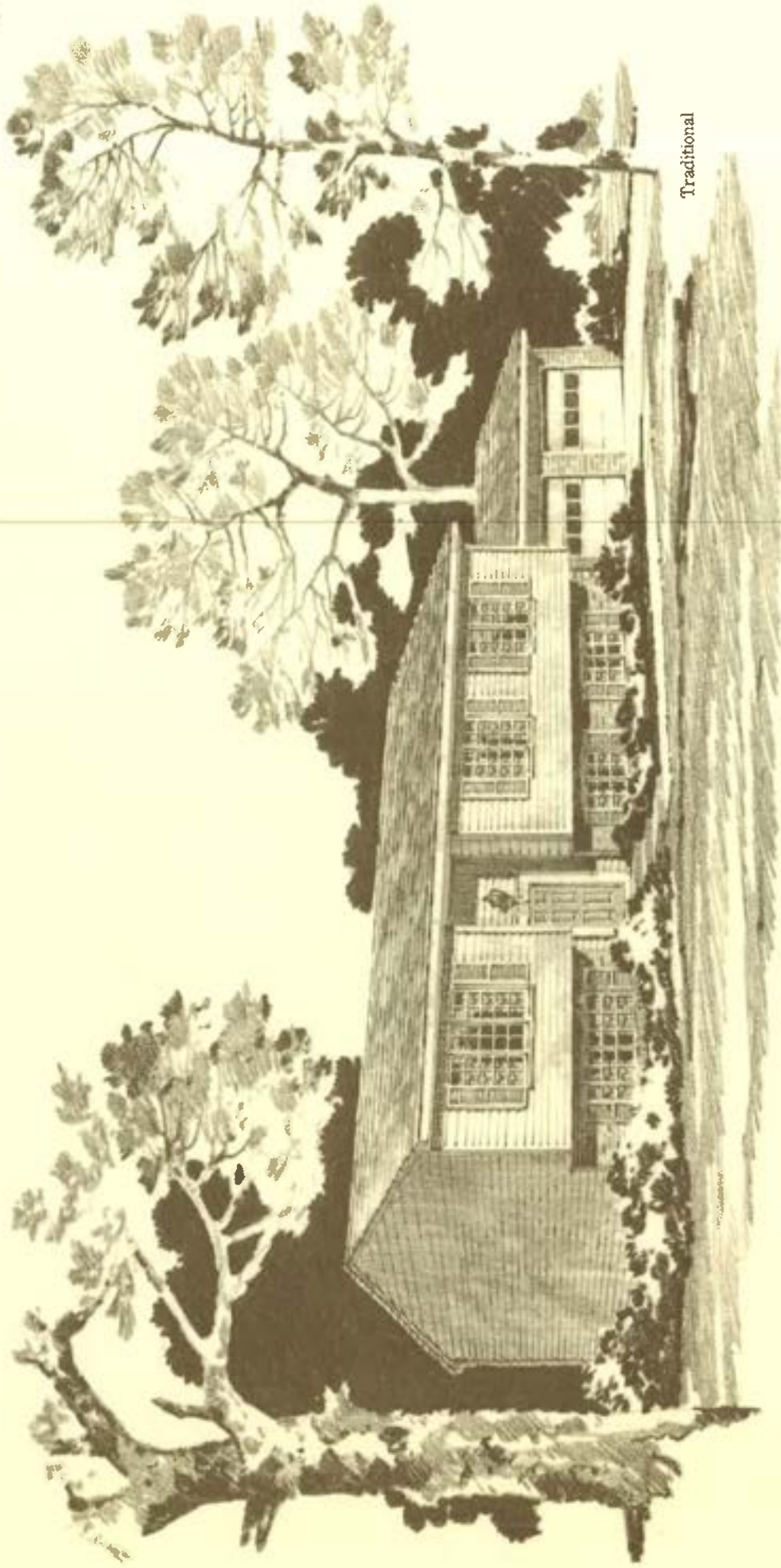
*Savings vary. Find out why in the seller's fact sheet on R-Values. Higher R-Values mean greater insulating power.



This sheet is for illustrative purposes only and not part of a legal contract. Floor plans and standard features may vary according to alternate style selected and are subject to change without notice. Optional items indicated are available at additional cost.



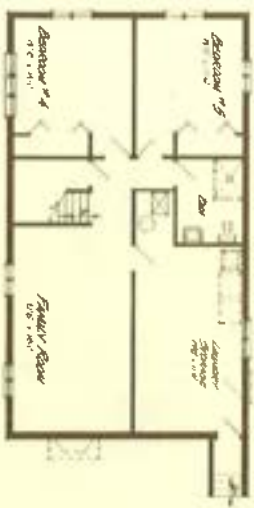
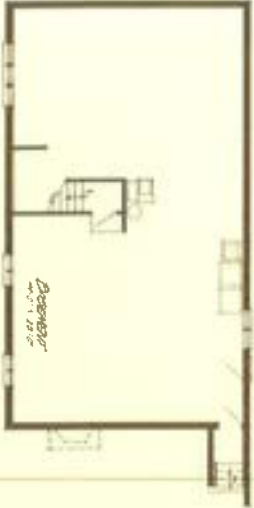
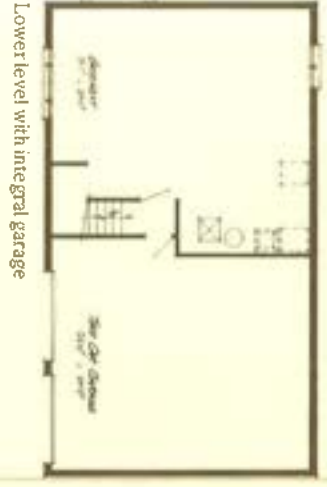
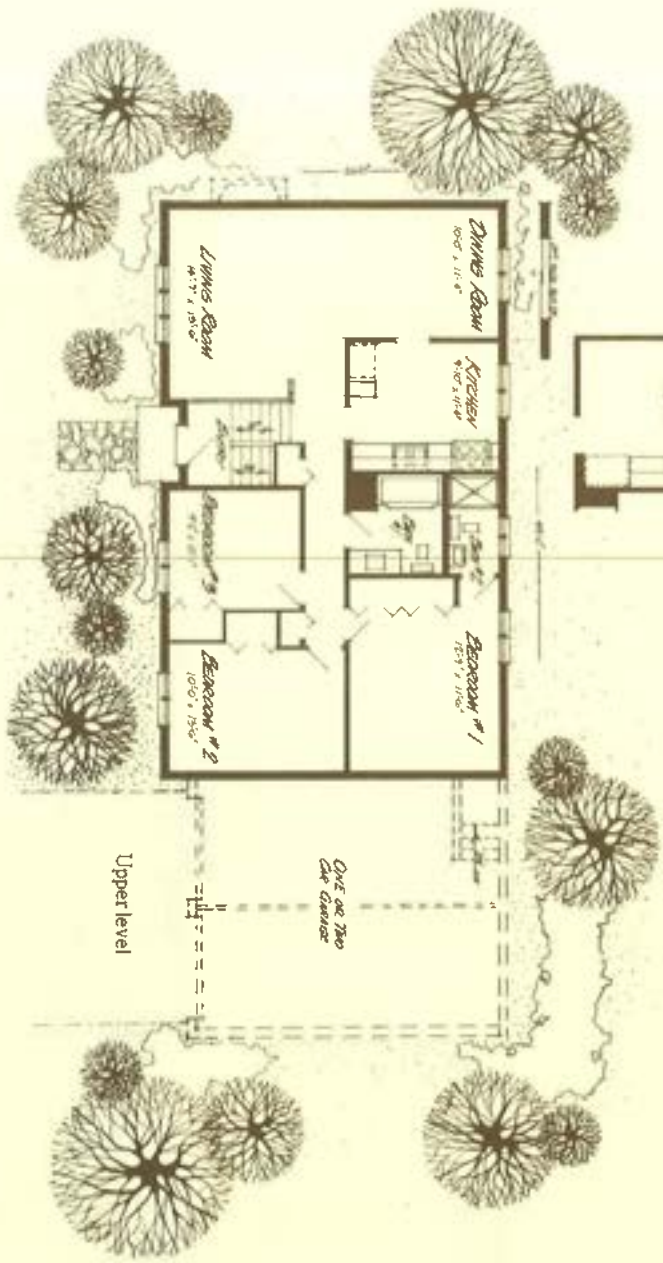
The Rymark One



Traditional



Alternate kitchen
with 5 bedrooms only



The Rymark One

This exceptionally popular bi-level has three bedrooms on the upper level. There's a full bath, and a shower off the master bedroom. You'll have plenty of space for family activities in the living-dining area, adjoined by the kitchen with its custom cabinets.

For even more space, you can choose an optional family room, with powder room in the lower level. A great place for lounging around or entertaining in style. Wall-to-wall carpet is included in bedrooms, living and dining rooms.

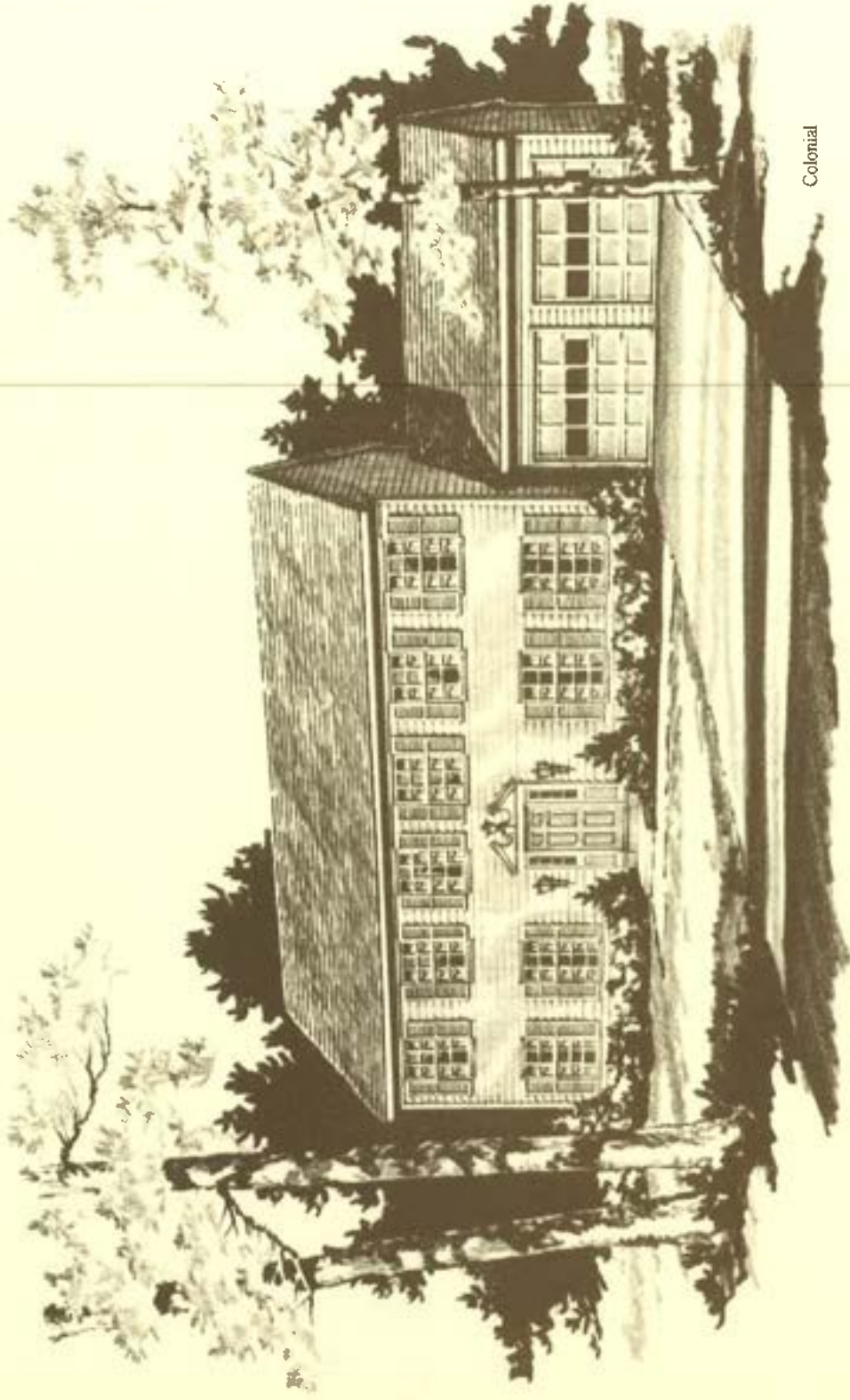
A spacious laundry room area is in the lower level, and The Rymark One has a two-car integral garage or optional one or two-car attached garage. Another feature that means a lot these days is the way this home is super-sealed and insulated our special way to save energy. Pre-settlement and six-month service inspections are made, for your satisfaction.



This sheet is for illustrative purposes only and not part of a legal contract. Floor plans and standard features may vary according to alternate style selected and are subject to change without notice. Optional items indicated are available at additional cost.

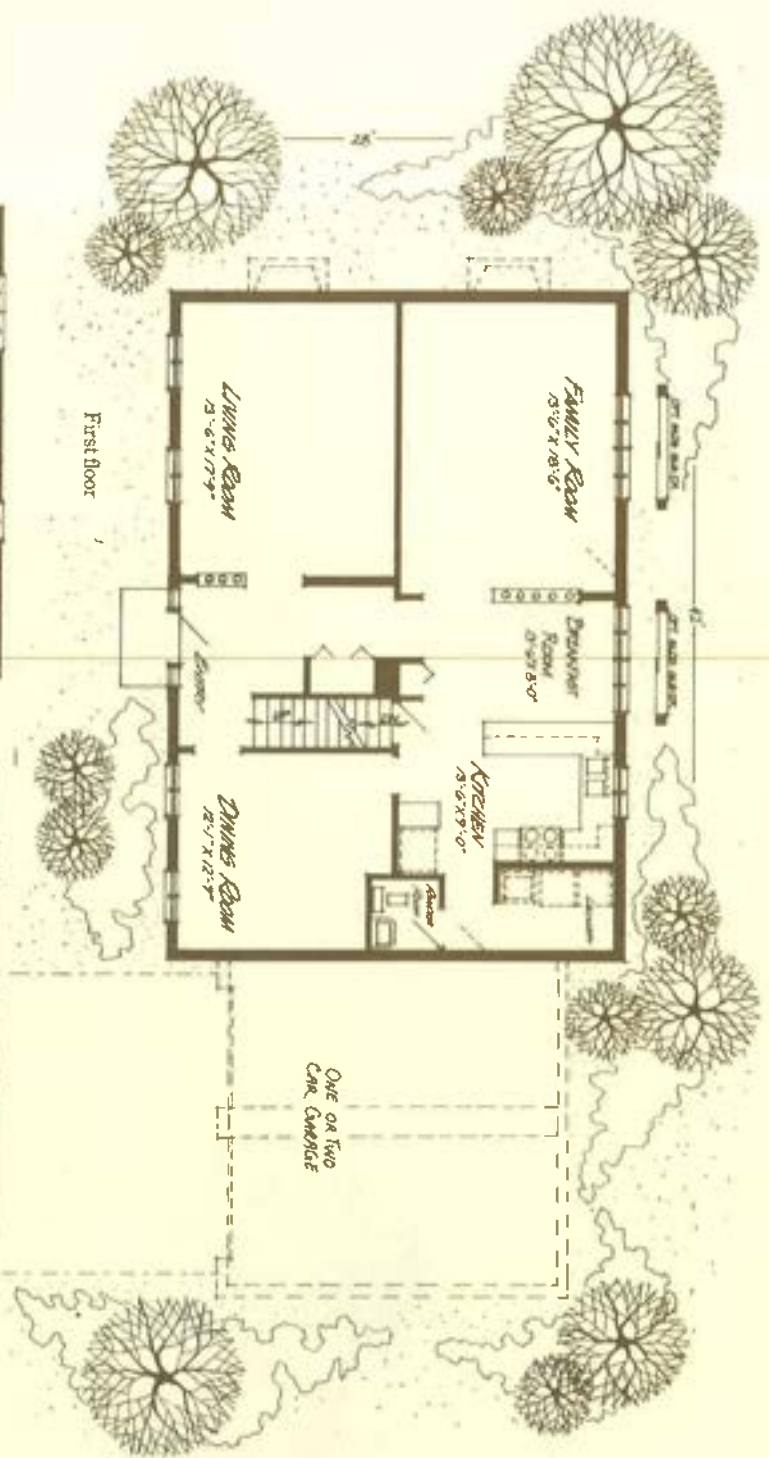


The Shenandoah "A"



Colonial



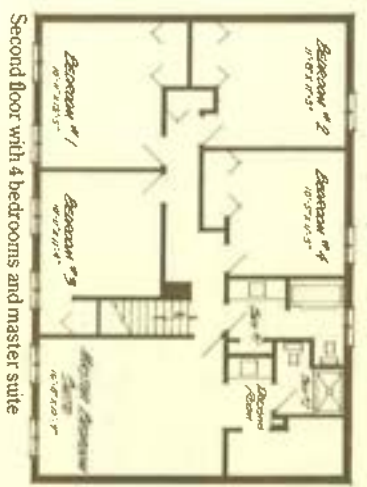
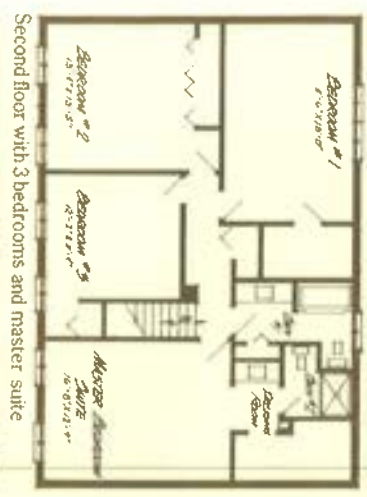


The Shenandoah "A"

The elegance of yesteryear is tastefully combined with modern spaciousness and luxury in this two-story Colonial which features Western Reserve styling.

The Shenandoah offers a master suite and your choice of 3 or 4 additional bedrooms. Downstairs you'll find a powder room, with large living and dining rooms and a paneled family room. Fireplaces are optional in family and living rooms. And there's wall-to-wall carpet to enhance the luxurious atmosphere of this home.

The kitchen includes a breakfast room, a pantry and handsome custom cabinets. In addition, there's a laundry or mud room, a full basement -- and options for one- or two-car attached garage. The Shenandoah is super-sealed and insulated our special way to save energy. And we conduct pre-settlement and six-month service inspections to assure complete satisfaction.

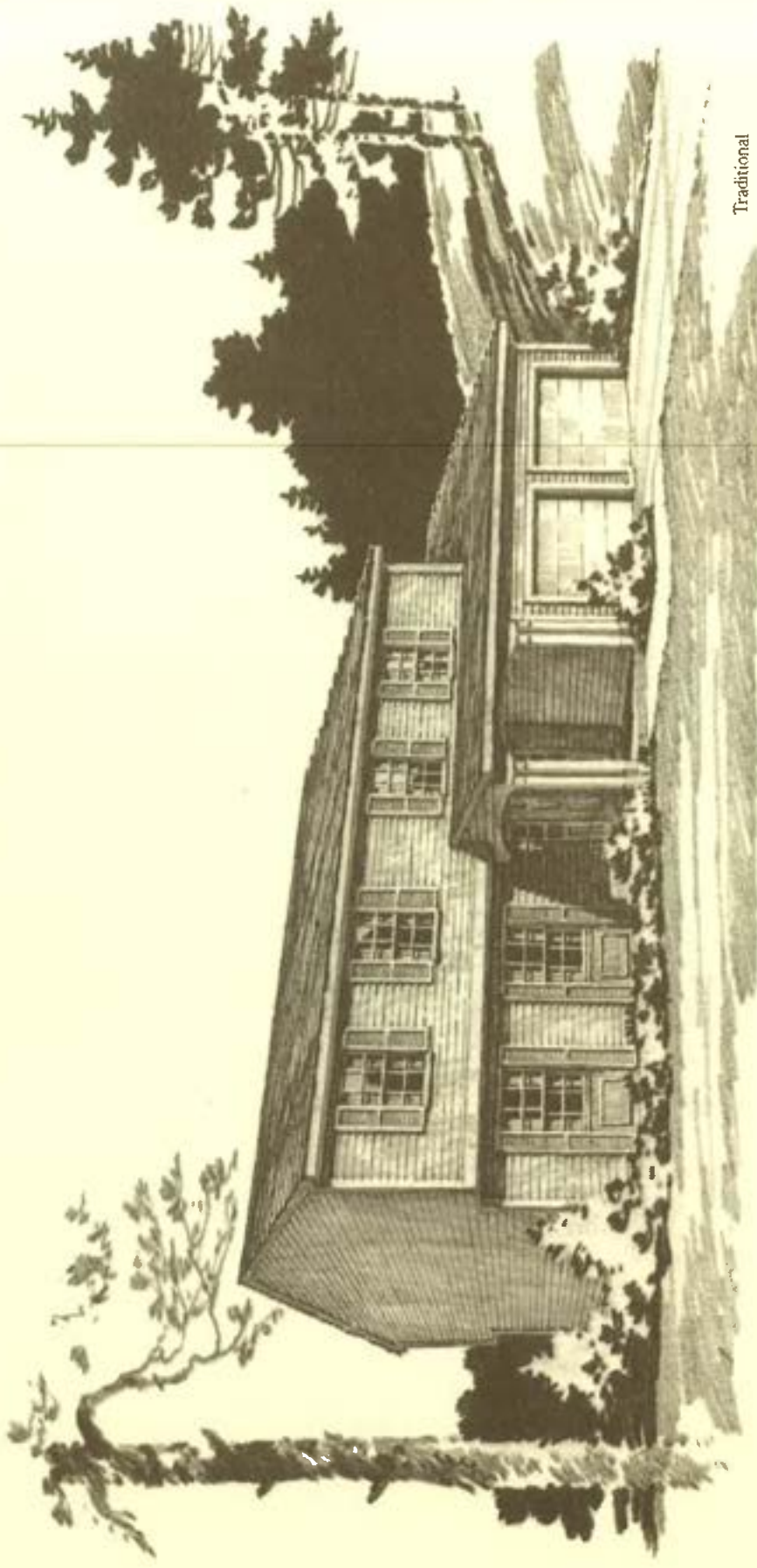


 **Ryan Homes, Inc.**

This sheet is for illustrative purposes only and not part of a legal contract. Floor plans and standard features may vary according to alternate style selected and are subject to change without notice. Optional items indicated are available at additional cost.



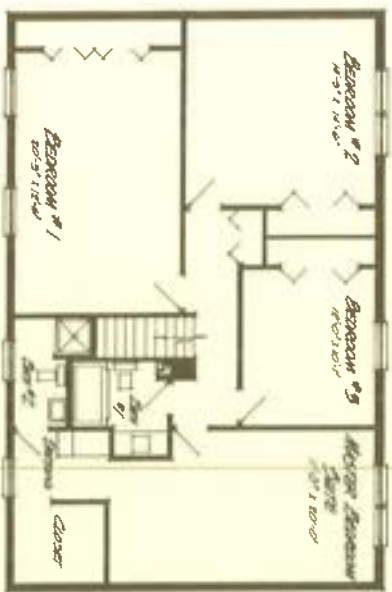
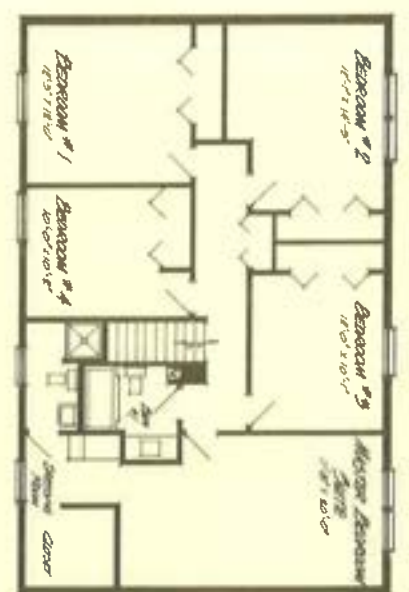
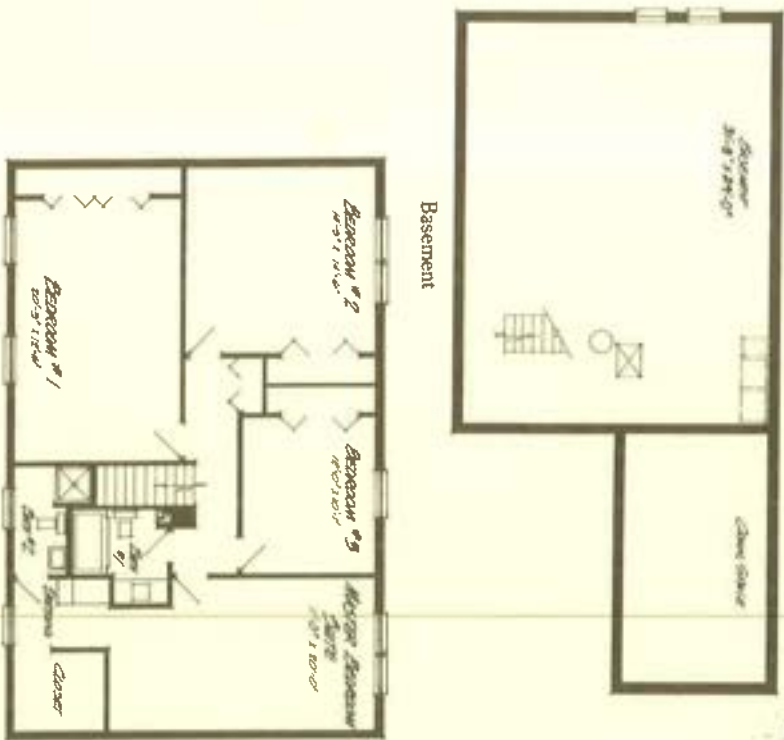
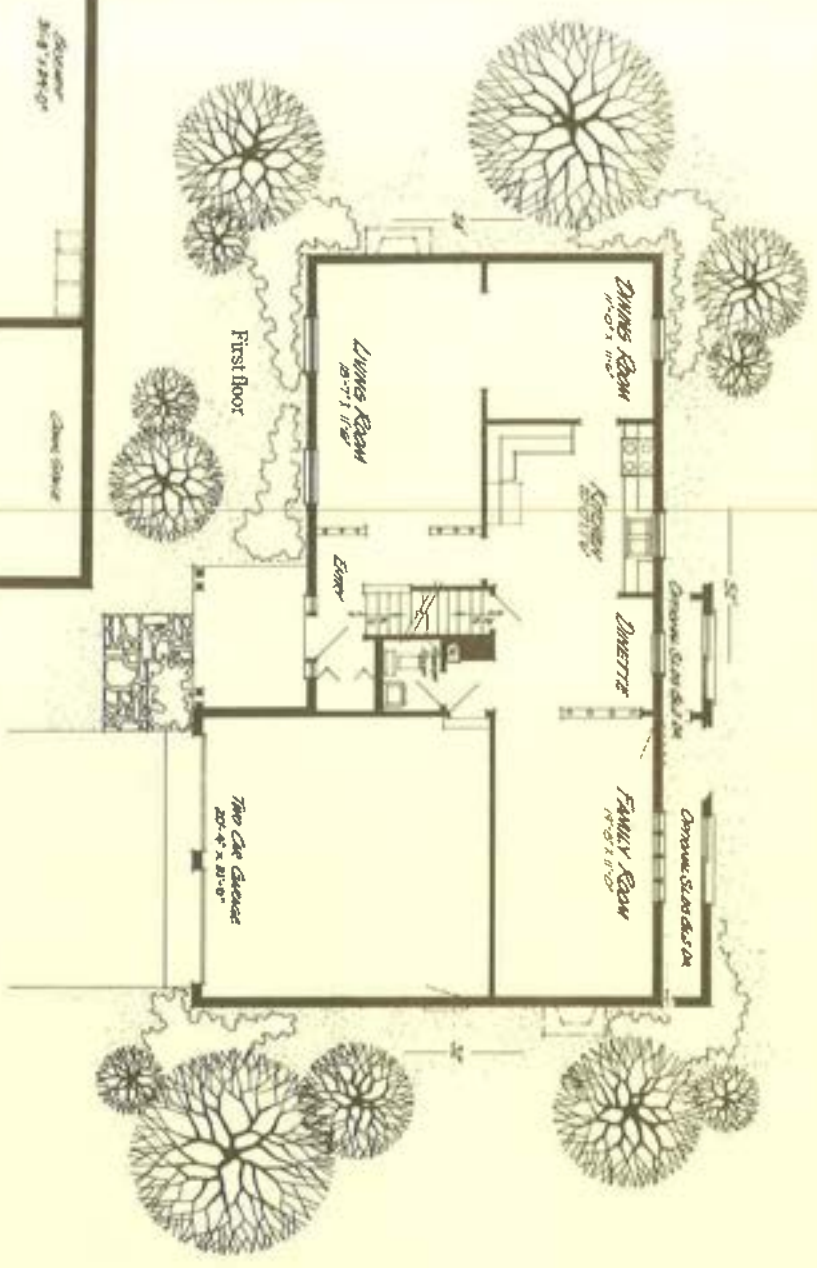
The Vicksburg



Traditional



Colonial



The Vicksburg

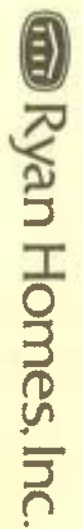
Prestige and gracious living are tastefully presented in this excellent two-story design. The Vicksburg has the space and beautiful features to handle the many demands of active, growing families.

Downstairs there is a large family room for pleasant relaxation or entertaining. This, and the large living room have options for fireplaces. Also on the first floor is a handy powder room. And the formal dining room is adjacent to a kitchen which includes its own dinette plus an oven/range.

Upstairs, enjoy the convenience of two baths and three or four bedrooms. In addition, you'll find a large master bedroom suite with its own private dressing room and bath. A feature which enhances the livability of this truly outstanding home.

Elegance and warmth are added by wall-to-wall carpet in bedrooms, closets, living room, dining room, family room, and on stairs. There's a full basement and a two car garage. Ryan's Standard Energy Package super-seals and insulates your home against the elements.* For your added satisfaction, we make presentation and six-month service inspections.

*Savings vary. Find out why in the seller's fact sheet on R-values. Higher R-values mean greater insulating power.



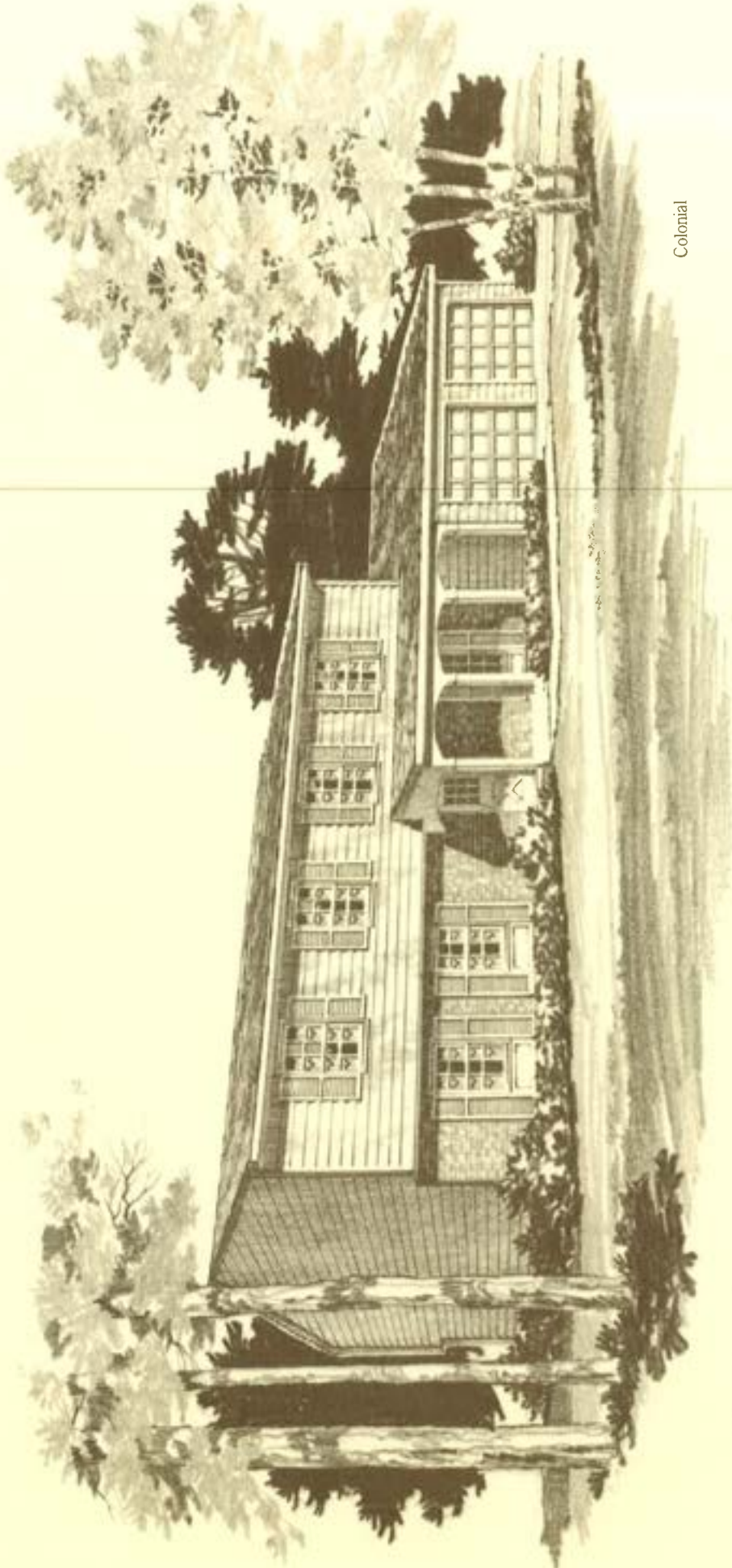
This sheet is for illustrative purposes only and not part of a legal contract. Floor plans and standard features may vary according to alternate style selected and are subject to change without notice. Optional items indicated are available at additional cost.



Second floor with 4 bedrooms

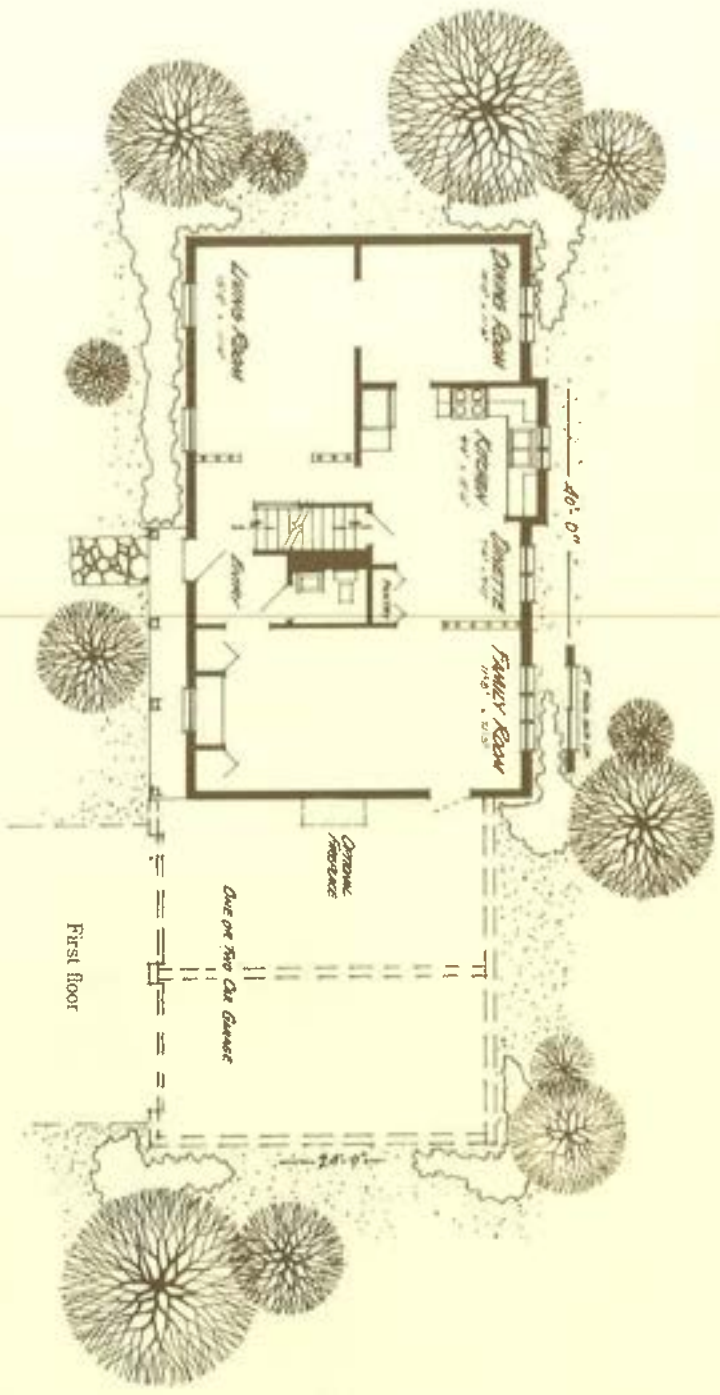
Second floor with 5 bedrooms

The Winchester



Colonial





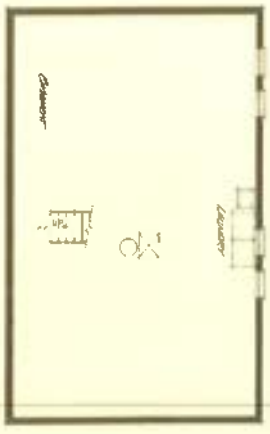
First floor



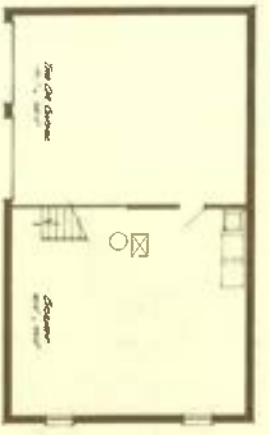
Second floor with three bedrooms plus master suite



Second floor with 5 bedrooms



Unfinished basement



Unfinished basement with two car integral garage

The Winchester

Here's one of our most elegant and versatile two-story homes, offering an excellent choice of design – both inside and out. Floor plans to suit your exact tastes and household requirements.

This home comes with either a full basement or with plans for front integral garage. Optional attached garages.

The first floor has a spacious entry with adjacent powder room, formal living and dining rooms, a large kitchen with dinette, oven/range, custom cabinets and pantry. The kitchen leads into a handsome family room available with optional fireplace. Great for family activities and entertaining.

Second-floor choices include four or five bedrooms with two baths. There's also a plan featuring a beautiful master bedroom suite with its own private shower bath and dressing room.

Luxurious wall-to-wall carpet enhances the bedrooms, closets, living room, dining room and stairs. And The Winchester is super-sealed and insulated our special way to save energy. We also make pre-settlement and six-month service inspections to assure your complete satisfaction.



This sheet is for illustrative purposes only and not part of a legal contract. Floor plans and standard features may vary according to alternate style selected and are subject to change without notice. Optional items indicated are available at additional cost.

