

The Burkeshire

Three-Bedroom Townhome



The Burkeshire Three-Bedroom Townhome

Elegance and imaginative styling are hallmarks from top to bottom of this attractive Ryan townhome.

Just off the welcoming warmth of the first-floor entry is a comfortable front kitchen, a well-appointed powder room, and a spacious guest closet. In the kitchen, you'll find plenty of space for the breakfast table, plus furniture-style cabinets, disposal, dishwasher, and oven/range. Also, the kitchen features the convenience of a pass-through to the formal dining room.

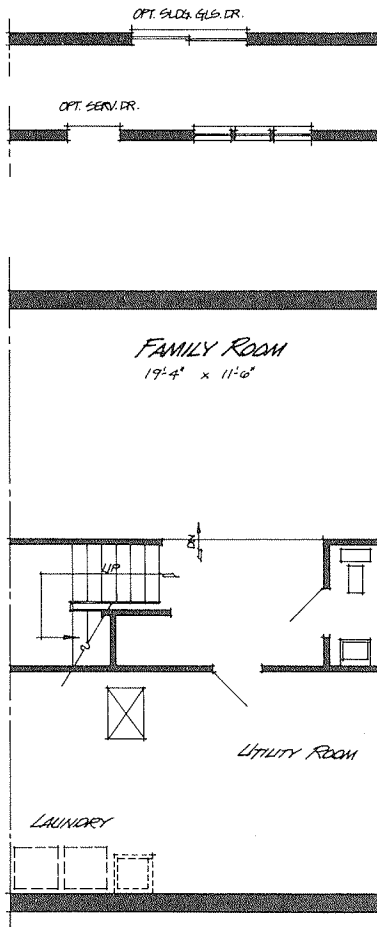
The center of this home is the formal dining room. It is complemented by a formal, sunken living room at the rear. For quiet winter evenings, a full corner fireplace is available.

Upstairs are three bedrooms and a full bath. The spacious master bedroom is designed for either a large walk-in closet or an intimate private shower bath and dressing area. Wall-to-wall carpet is standard in living areas, bedrooms, closets, and on stairs.

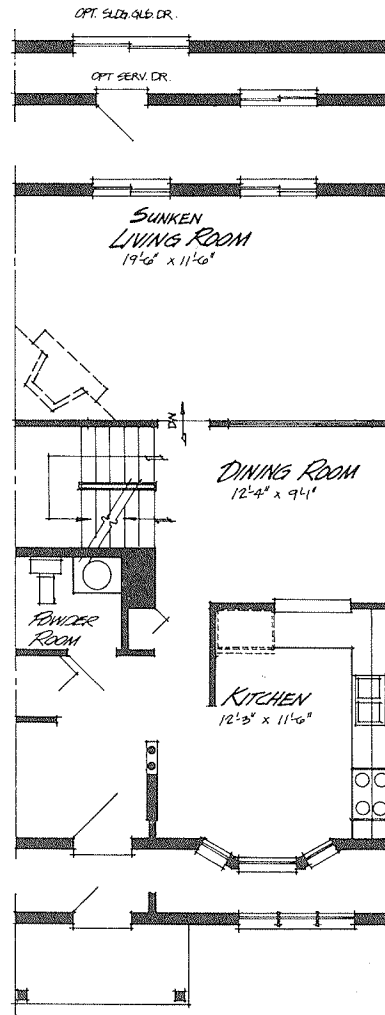
Down in the basement, the design speaks of efficiency and convenience with a well-planned laundry area and plenty of storage. It can also be finished with a beautiful stepdown family room and even its own powder room nearby.

Ryan's Standard Energy Package super-seals and insulates this home against the elements.* We also make presettlement and six month service inspections for your satisfaction.

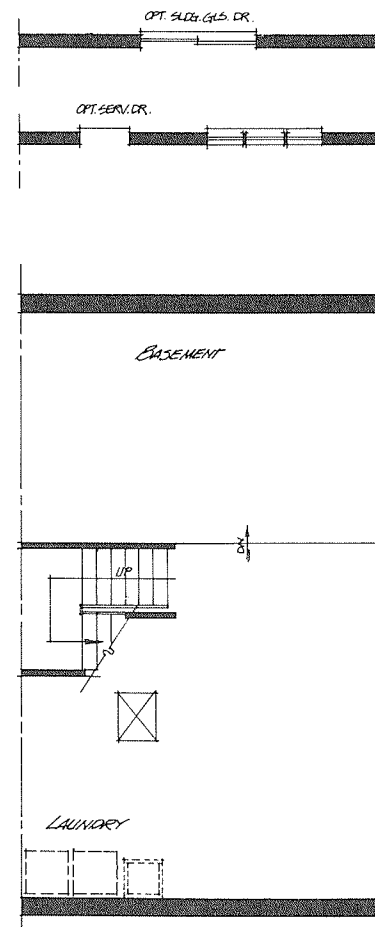
*Savings vary. Find out why in the seller's fact sheet on R-values. Higher R-values mean greater insulating power.



Basement with family room.



First floor



Basement

 Ryan Homes, Inc.

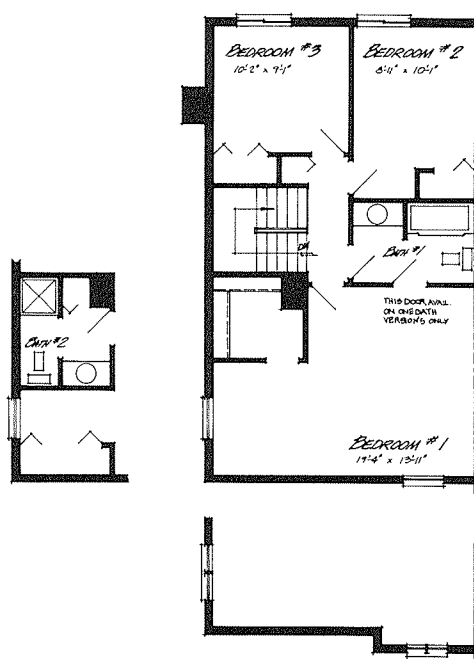
This sheet is for illustrative purposes only and is not part of a legal contract. Floor plans and standard features may vary according to lot and alternate style selected, and are subject to change without notice. Optional items indicated are available at additional cost.



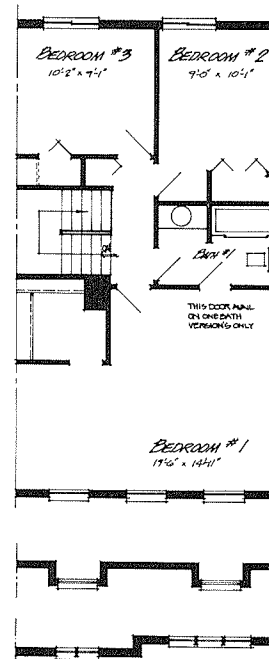
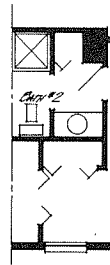
The Berkshire "E"

Three-Bedroom Townhome

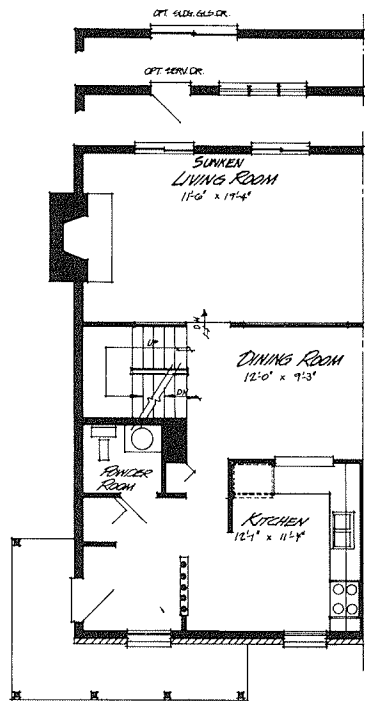




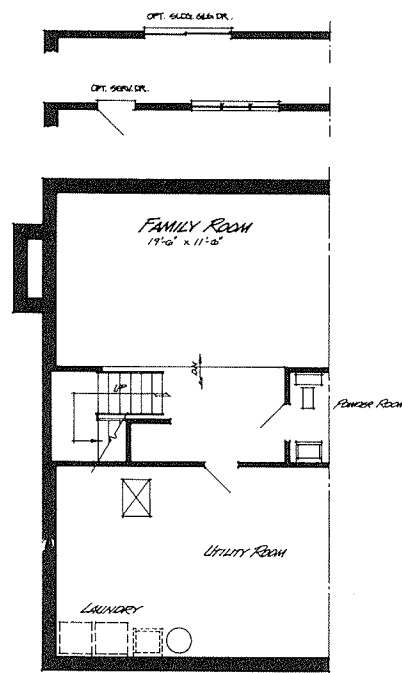
Second floor



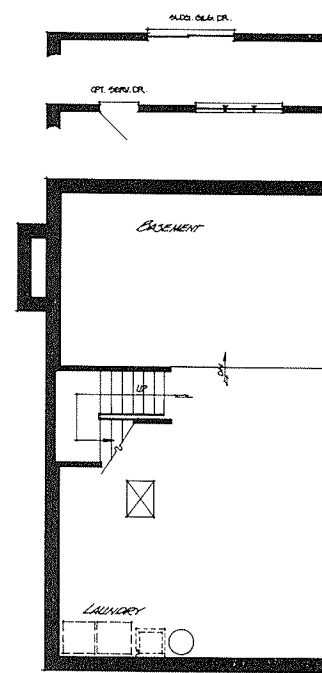
Second floor



First floor



Basement with family room and powder room



Basement

The Berkshire "E" Three-Bedroom Townhome

Luxury, elegance, and fine design are built into every level of this excellent Ryan townhome.

The Berkshire "E" always an end unit, is available with a sophisticated front porch with side entry. Just off the formal entry is a commodious guest closet and a graceful powder room. Across the front is a comfortable, eat-in kitchen equipped with oven/range, dishwasher, disposal, and furniture-style cabinets. In the center of this home is a full, formal dining room. Stretching across the back of the home is a generous, sunken living room with a choice of wood-burning fireplaces.

On the top level are three bedrooms and a large, full bath. The master bedroom is designed for either a large walk-in closet or a private shower and dressing area. Wall-to-wall carpeting is standard in living areas, bedrooms, closets, and on stairs.

Ryan's Standard Energy Package super-seals and insulates this home against the elements.* We also make presettlement and six-month service inspections for your satisfaction.

*Savings vary. Find out why in the seller's fact sheet on R-values. Higher R-values mean greater insulating power.

 **Ryan Homes, Inc.**

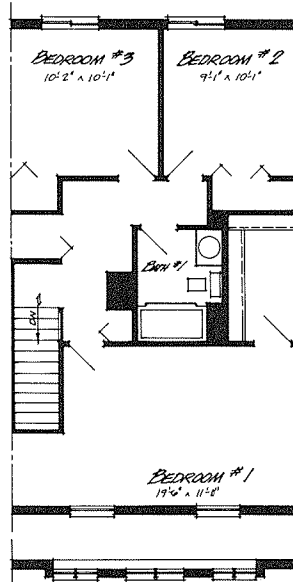
This sheet is for illustrative purposes only and is not part of a legal contract. Floor plans and standard features may vary according to lot and alternate style selected, and are subject to change without notice. Optional items indicated are available at additional cost.



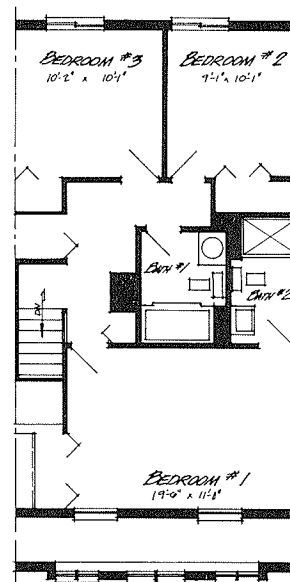
The Devonshire

Three-Bedroom Townhome

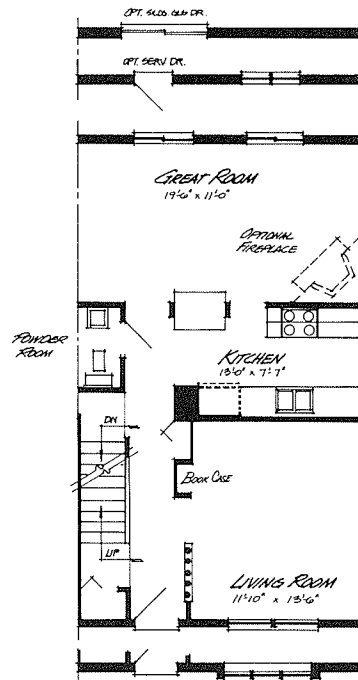




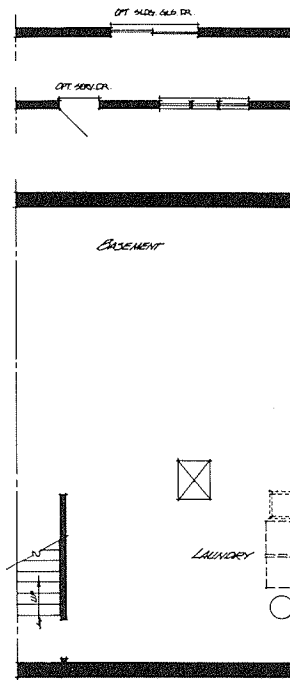
Second floor



Second floor



First floor



Basement

The Devonshire Three-Bedroom Townhome

A handsome blend of traditional and Colonial styling and excellent use of space are featured in this beautiful Ryan townhome. It offers three levels of comfortable living – very close to what you'd find in a single-family residence.

When you enter this luxurious townhome, you'll discover elegance combined with informality and true convenience. On the first floor is a formal living room – plus a Great Room that blends family and dining activities in a pleasant open-space concept. Available in the Great Room is a dramatic corner fireplace. The adjacent kitchen has an oven/range, disposal, dishwasher, and furniture-style cabinets. Near the first-floor entry there's also a handy powder room and a guest closet.

Three comfortable bedrooms and plenty of closet space are waiting for you upstairs. There's also a full bath. The master bedroom offers a choice of walk-in closet or private shower bath. And still more luxury is in store with handsome wall-to-wall carpeting throughout living areas, bedrooms, closets, and on stairs.

An efficient laundry area is in the basement. Another convenience you'll appreciate. And, when lots permit, you could have a service door or sliding glass doors at the rear of the basement.

Ryan's Standard Energy Package super-seals and insulates this home against the elements.* We also make presettlement and six-month service inspections for your satisfaction.

*Savings vary. Find out why in the seller's fact sheet on R-values. Higher R-values mean greater insulating power.

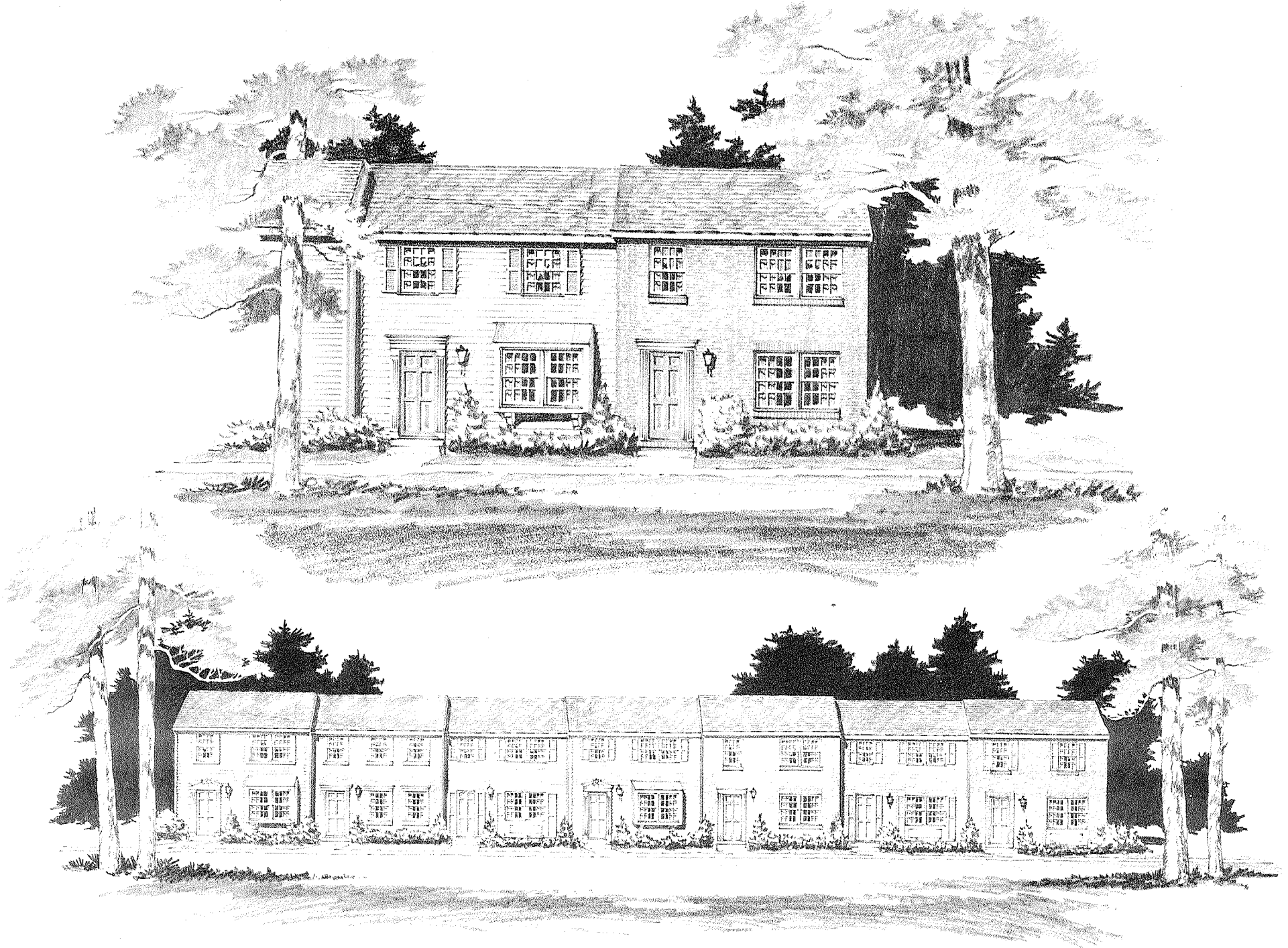
 **Ryan Homes, Inc.**

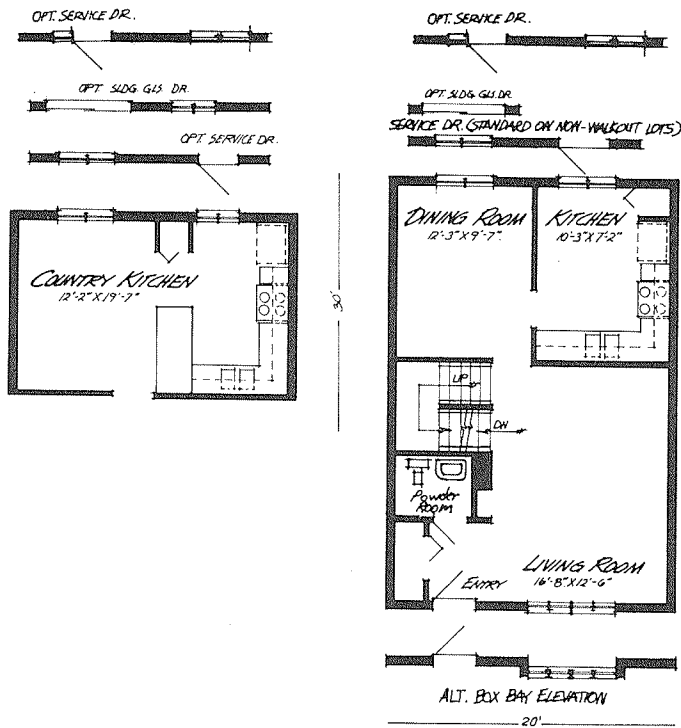
This sheet is for illustrative purposes only and is not part of a legal contract. Floor plans and standard features may vary according to lot and alternate style selected, and are subject to change without notice. Optional items indicated are available at additional cost.



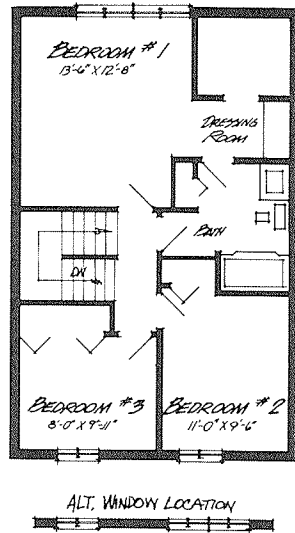
The Fairfield

Three-Bedroom Townhomes

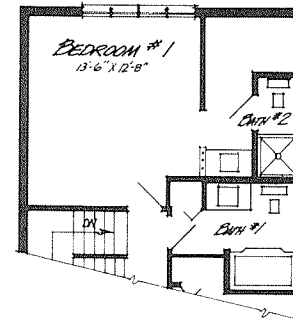




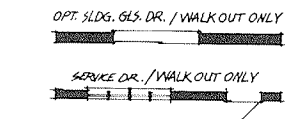
First floor



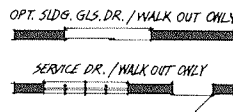
Second floor



Second Floor option



Finished basement



Unfinished basement

The Fairfield Three-bedroom townhome

This handsome Ryan townhome gives you the tax-saving advantages of owning your own home, plus freedom from most time-consuming maintenance chores.

The Fairfield has spacious living and dining rooms on the first floor, an entry with powder room and guest closet; and a kitchen with oven/range and furniture-styled cabinets. If you prefer, there's an option for a large country kitchen in this model.

The second floor includes three bedrooms, with a dressing area and walk-in closet off the master bedroom – with an option for a shower bath in addition to the full bath. Wall-to-wall carpet is standard in bedrooms, closets and living room.

The basement can be unfinished, or you can have the option for a family room with powder room. The Fairfield is super-sealed and insulated our special way to save energy.* Presettlement and six-month service inspections are made, for your satisfaction.

*Savings vary. Find out why in the seller's fact sheet on R-Values. Higher R-Values mean greater insulating power.

 Ryan Homes, Inc.

This sheet is for illustrative purposes only and not part of a legal contract. Floor plans and standard features may vary according to alternate style selected and are subject to change without notice. Optional items indicated are available at additional cost.



The Cambridge

Three-Bedroom Townhome



The Cambridge Three-Bedroom Townhome

Beauty, convenience and luxury are spotlighted by the innovative design of this handsome Ryan townhome. Traditional exterior lines are enhanced in this model, always positioned as an end unit.

Luxury greets you from the moment you step inside. The first-floor entry leads to an elegant formal living room at the front of the house. Depending upon the exterior elevation you select, you'll discover a massive brick fireplace with bookcases.

Also available to you is a handsome wood-beamed ceiling. Near the entry is a handy powder room and a guest closet. Ideal for making visitors feel right at home.

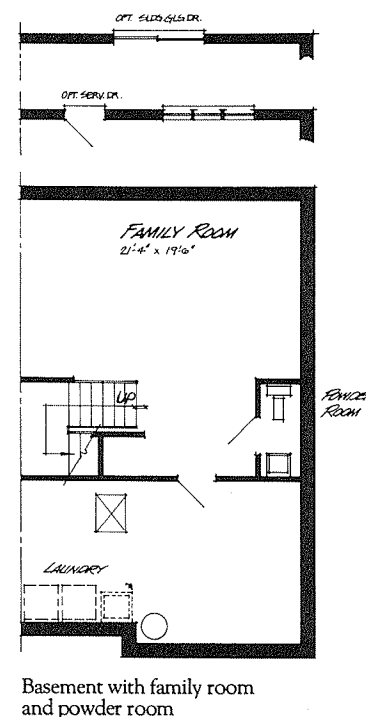
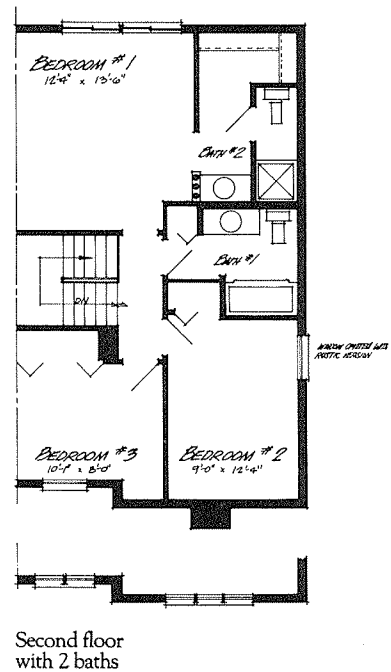
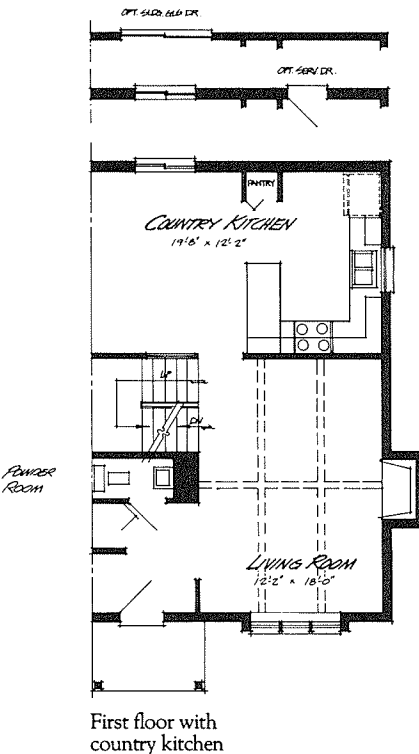
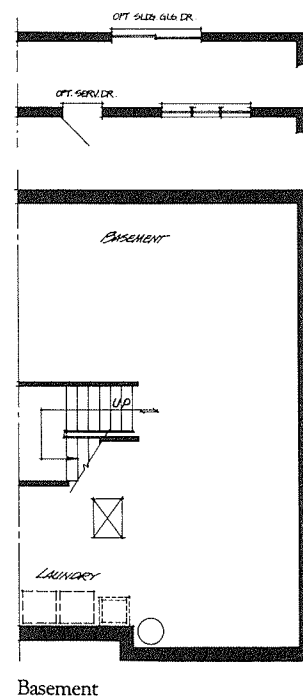
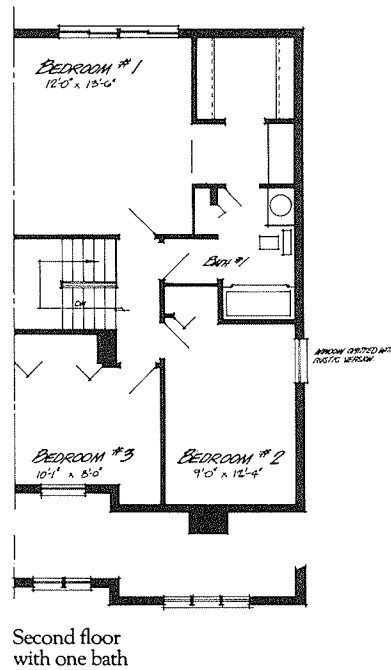
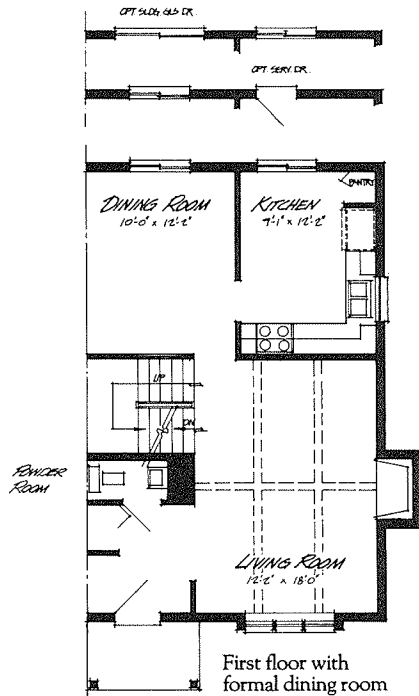
You can choose either a formal dining room or a sprawling country kitchen. What's more, these gleaming kitchens are equipped with oven/range, disposal, dishwasher, and furniture-style cabinets. In some cases, depending on lot conditions, a sliding glass door is available off the rear of the dining room; or a rear service door in the kitchen.

Upstairs are three attractive bedrooms and a full bath. The master bedroom suite is beautifully designed for convenience and relaxation — with either a large walk-in closet, or a private shower bath, dressing area and closet. Wall-to-wall carpeting adds still another luxurious dimension in living areas, bedrooms, closets, and on stairs.

The basement, with laundry area, can be finished with an attractive family room and powder room for added living and recreational pleasures.

Ryan's Standard Energy Package super-seals and insulates this home against the elements.* We also make presettlement and six-month service inspections for your satisfaction.

*Savings vary. Find out why in the seller's fact sheet on R-values. Higher R-values mean greater insulating power.



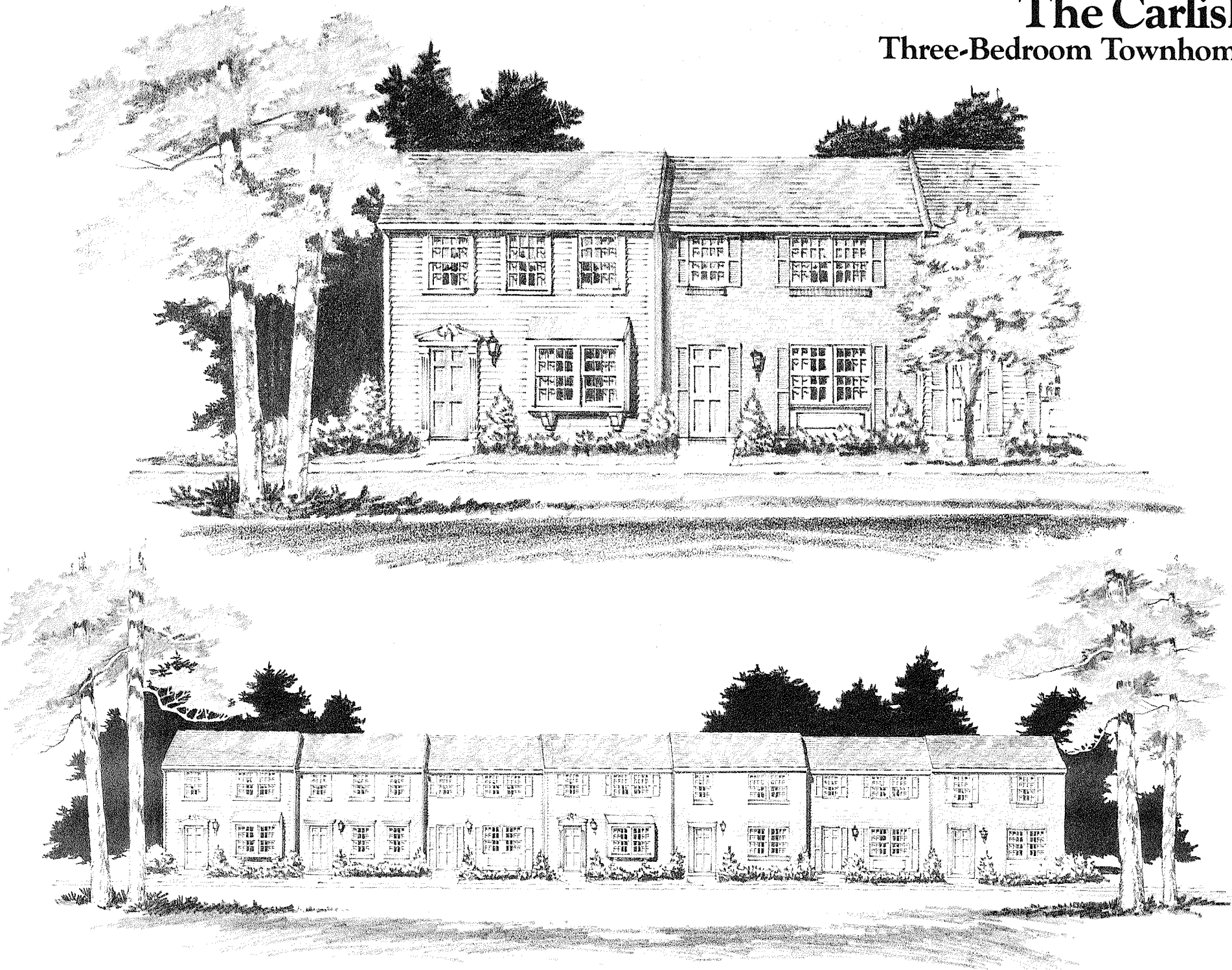
 Ryan Homes, Inc.

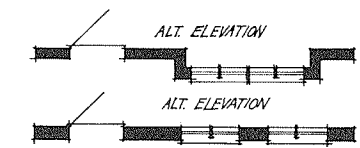
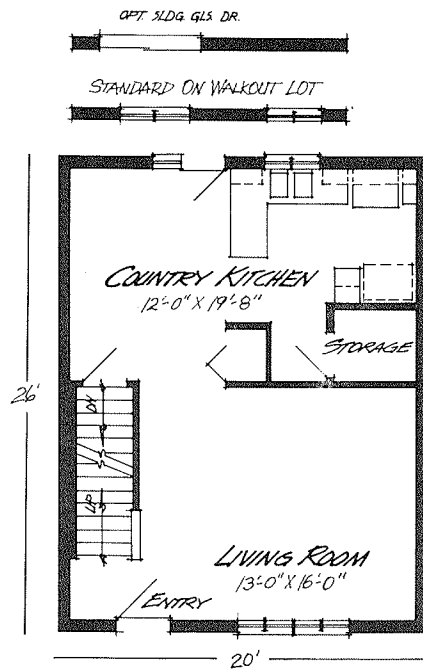
This sheet is for illustrative purposes only and is not part of a legal contract. Floor plans and standard features may vary according to lot and alternate style selected, and are subject to change without notice. Optional items indicated are available at additional cost.



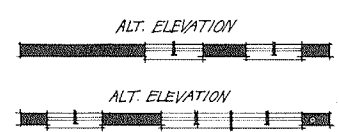
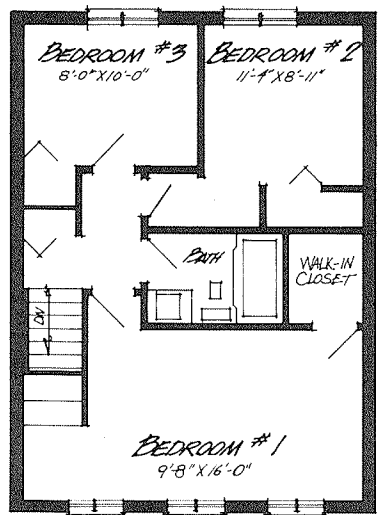
The Carlisle

Three-Bedroom Townhomes

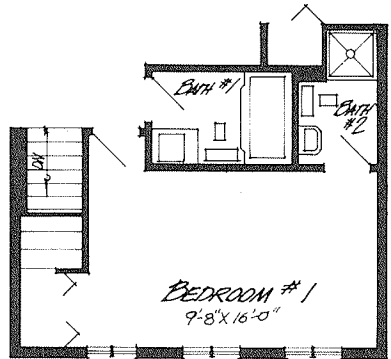




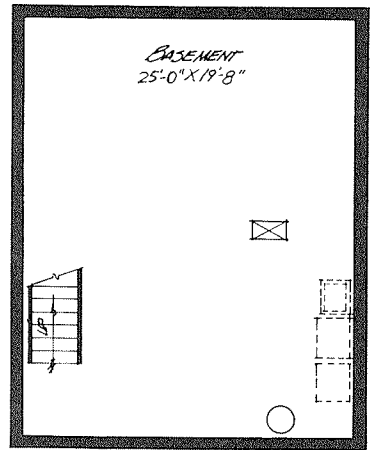
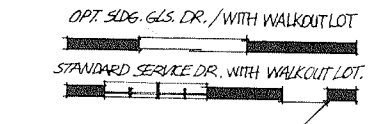
First floor



Second floor



Master bedroom with optional shower bath



Basement

The Carlisle Three-bedroom townhome

This beautiful Ryan townhome gives you the tax-saving advantages of owning your own home, plus freedom from most time-consuming maintenance chores.

The Carlisle has a spacious living room on the first floor. Also a large country kitchen with dining space, and a storage area which can be converted to an optional powder room. Plus oven/range and furniture-styled cabinets.

Upstairs are three bedrooms and a full bath, a walk-in closet or an optional shower bath off the master bedroom. You'll appreciate the added luxury of wall-to-wall carpet in bedrooms, closets and living room.

The Carlisle has a full basement with laundry area. This home is super-sealed and insulated our special way to save energy.* And we make presettlement and six-month service inspections for your satisfaction.

*Savings vary. Find out why in the seller's fact sheet on R-Values. Higher R-Values mean greater insulating power.



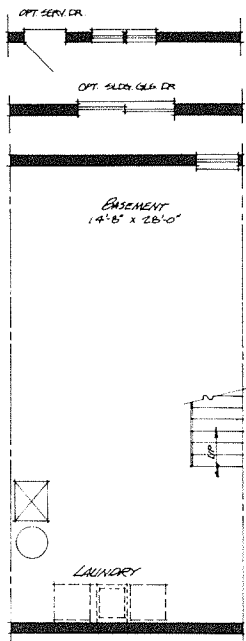
This sheet is for illustrative purposes only and not part of a legal contract. Floor plans and standard features may vary according to alternate style selected and are subject to change without notice. Optional items indicated are available at additional cost.



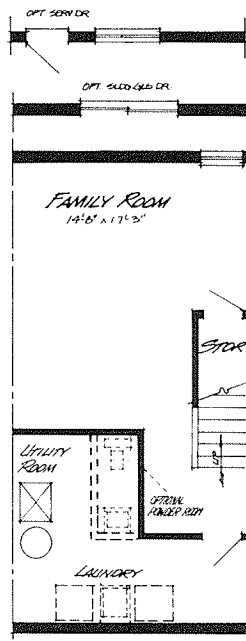
The Pepperwood Two-Bedroom Townhomes



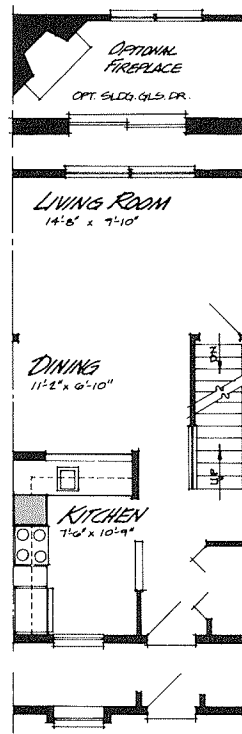
Pepperwood "A"



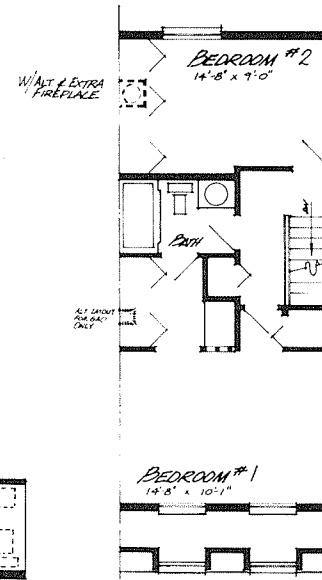
Unfinished basement



Finished family room with optional powder room

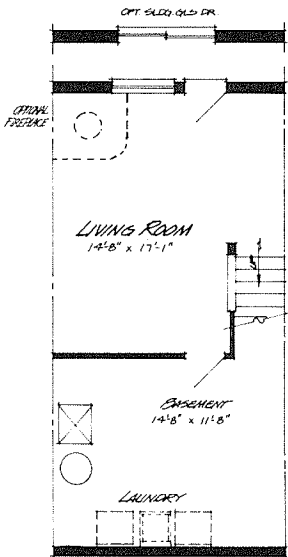


First floor

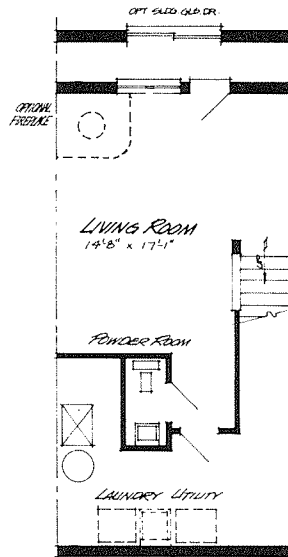


Second floor

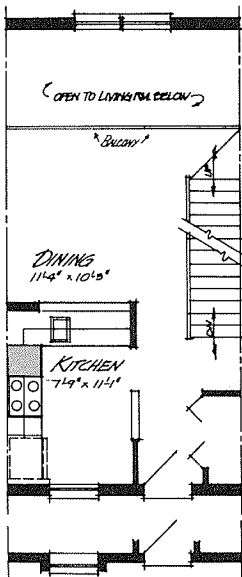
Pepperwood "B"



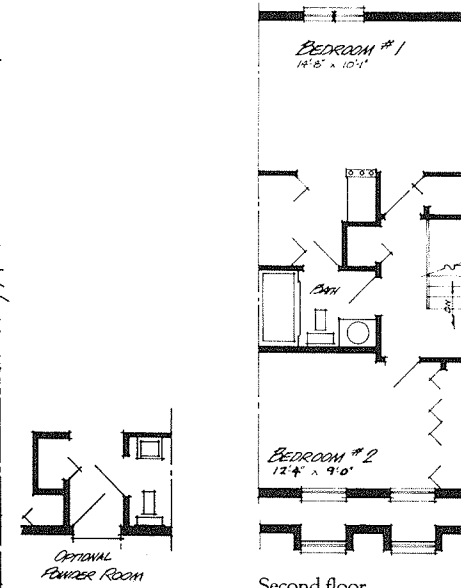
Finished lower level living room



Finished lower level living room with powder room



First floor with balcony



Second floor

The Pepperwood "A"

Three beautiful living levels make the Pepperwood a practical alternative to conventional home ownership.

The first floor includes spacious living and dining areas, kitchen with oven/range and custom cabinets, and space for a powder room. Available for the living room are a corner fireplace and sliding glass doors.

On the second floor are two bedrooms, full bath, and plenty of closet space. The basement can be finished with a family room and powder room for additional living area. It also includes a utility room. All Pepperwood townhomes have wall-to-wall carpeting in the living room, dining room, bedrooms, stairs and hall...and sound-absorbing insulation.

The Pepperwood "B"

This plan includes features you'll find in the Pepperwood "A"—with still another living dimension. The balconied dining room on the first floor overlooks a living room situated in the lower level, providing a touch of contemporary flair. Also in the lower level is a laundry room and space for a powder room.

The first floor is available with a powder room. The kitchen is equipped with oven/range and custom cabinets. Two bedrooms, full bath, and roomy closets are on the second floor. And of course, there's wall-to-wall carpeting in the living room, dining room, bedrooms, and hall.

Ryan's Standard Energy Package super-seals and insulates these townhomes against the elements.* Presettlement and six-month service inspections are standard.

*Savings vary. Find out why in the seller's fact sheet on R-values. Higher R-values mean greater insulating power.

 **Ryan Homes, Inc.**

This sheet is for illustrative purposes only and not part of a legal contract. Floor plans and standard features may vary according to the lot and alternate styles selected, and are subject to change without notice. Optional items indicated are available at additional cost.

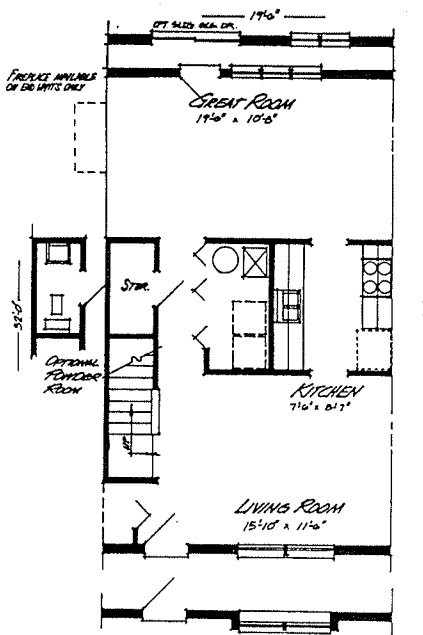


EQUAL HOUSING OPPORTUNITY

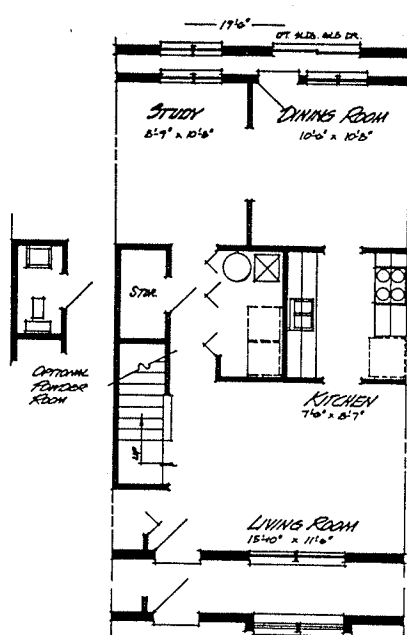
The Seneca

Three-Bedroom Townhouse

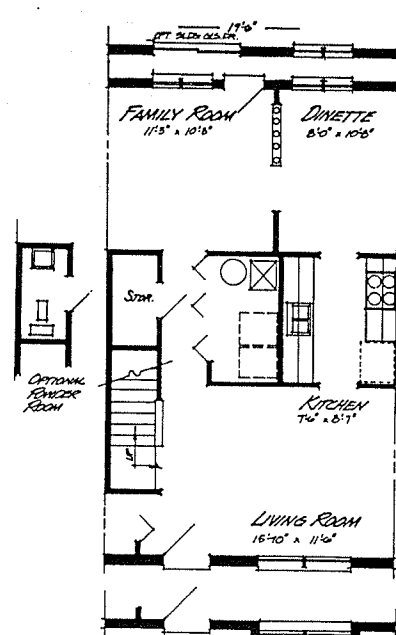




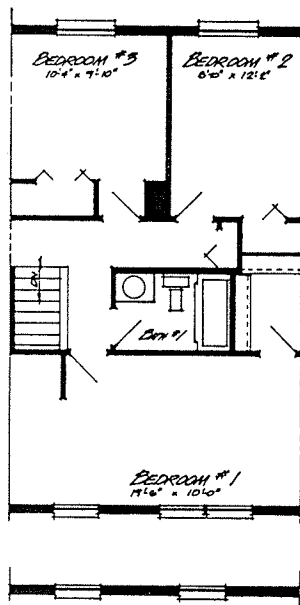
First floor with Great Room (TMS12)



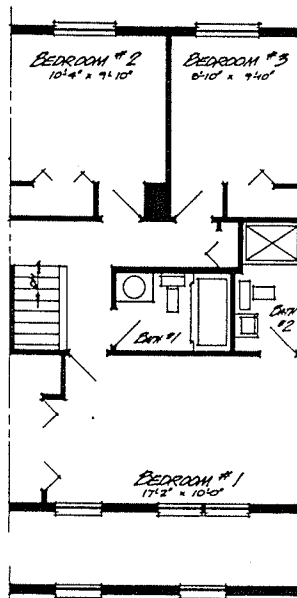
First floor with study & Dining Room (TMS15)



First floor with family room & dinette (TMS14)



Second floor with one bath



Second floor with two baths

The Seneca Three-Bedroom Townhouse

Here's a Ryan townhouse that combines elegance with versatile floor plans, and creates a handsome blend of traditional and Colonial exterior styling.

As you enter the foyer you'll notice a handy guest closet. In the center of the house is a spacious galley kitchen equipped with oven/range, and furniture-style cabinets.

Three different arrangements are offered in the rear section of the house. One is a "great room" concept, with a fireplace available. Another features a separate family room with access to the adjacent dinette. Still another plan creates a more formal dining room and a nearby study. Access to the rear yard is easy no matter which arrangement is chosen due to the handy service door. Sliding glass doors are also available. The first floor includes a laundry area. And a powder room is available off the hallway.

Upstairs are three bedrooms, plenty of closets, and a full bath. The master bedroom is designed for either a large walk-in closet or a private shower bath. More elegance is provided by wall-to-wall carpeting in living areas, bedrooms, closets, and on stairs.

Ryan's Standard Energy Package super-seals and insulates this home against the elements.* We also make presettlement and six-month service inspections for your satisfaction.

*Savings vary. Find out why in the seller's fact sheet on R-values. Higher R-values mean greater insulating power.

 Ryan Homes, Inc.

This sheet is for illustrative purposes only and is not part of a legal contract. Floor plans and standard features may vary according to lot and alternate style selected, and are subject to change without notice. Optional items indicated are available at additional cost.

